



Annual Report
2017

Give a Child a 
...it's where they belong!!  family

Index

| | |
|--|----|
| Message from the Chairman | 3 |
| Executive Director's Report | 5 |
| Integrated Child Protection Services | 7 |
| Helpdesk | 8 |
| Protective Behaviours | 9 |
| Foster Care | 10 |
| Social Work Services | 11 |
| Development Division | 12 |
| Local Development | 13 |
| National Development | 13 |
| Africa Development | 14 |
| Faith Based and Community Liaison | 15 |
| Child and Youth Care Centre (CYCC) operating as Temporary Safe Care (TSC) | 16 |
| Child Care Services | 17 |
| Residential Social Work and Therapy | 18 |
| Early Childhood Development- Happy Days School | 19 |
| Education – Community Schools | 19 |
| Healthcare | 20 |
| Special Needs Programme | 21 |
| International Volunteers | 22 |
| Support Services | 24 |
| Maintenance | 25 |
| Logistics | 25 |
| Housekeeping | 25 |
| Kitchen | 26 |
| Occupational Health and Safety | 26 |
| Financials | 27 |
| Human Resources | 28 |
| Fundraising, Marketing and Social Media | 29 |
| Donor Acknowledgement | 31 |
| Networking | 32 |
| Partners and Collaborators | 33 |
| Celebrating 25 Years in Serving Children, Families and Communities in Africa | 34 |
| Closure | 35 |

Message from the Chairman

We thank the Lord for taking us through the 2017 year of activities at GCF. It was a year with its own challenges, but the Lord saw us through them all. We lost a few members of staff during the year. Some of the staff members who left were not replaced due to financial constraints. We lost the services of our fundraiser who moved to another company. The Rinkwest family felt God's call to go and serve Him in Sweden.

Our gracious God answered our prayer for new Trustees by sending to us Kasturi Naidoo and Louise Kretschamer – a Social worker and an Accountant respectively, to join the Board of Trustees in 2018. In our quest to stretch our boundaries further, we acquired the services of a very able consultant who is guiding us in the new direction that the organization wants to take.

During 2017, the GCF programmes continued to be taken beyond the borders of our country. Our Executive Director, Monica and her team, have ably handled this development during the past year. Expansion work was also done within South Africa. Our development team launched a pilot project in Gauteng which has very good prospects for our future growth.

In September 2017, GCF celebrated 25 years of service to the Lord. This was a great moment of reflection and thanksgiving to the Almighty God, who started the work through the obedience of His servants, Basil and Monica Woodhouse. We praise the Lord for the many years of His provision for the needs of GCF, enabling it to touch many lives. As the Trust, we give thanks to God for the team that He has put together in order to achieve His own purpose through GCF. We are witnesses to the fact that GCF is under the direct leadership of the Lord. When we were faced with some serious challenges during the year, God showed up – He took care of all our needs through our faithful partners. We thank God for His faithfulness to His promise that He'll 'never leave us, nor forsake us'.

We send our special thanks to all our partners and supporters through whom the work at GCF is happening. May the Lord bless you all. Thank you to the Executive team, all GCF staff and the Board of Trustees, Basil Woodhouse, Roger Jasson, Musa Ngcongco and Dudu Khowa for your sacrificial service to the Lord through GCF – your tireless efforts are not in vain.

George Muisi





[EXECUTIVE DIRECTOR'S REPORT.]

Executive Director's Report

Twenty-Five Years Serving Children and Families has been an absolute privilege, but not without "Tears, Trials and Triumphs". The narrative of those 25 years is to be found in the magazine you will receive with the Annual Report – so I will not go there, but suffice to say that our work of Child Protection is far from over. There's no time to pat ourselves on the back – if we are brutally honest, we (as a society) have not delivered safety and protection for children. The statistics are worse than ever, as violence against women and children is probably at its highest point in our history.

criticism, it is understandable that so many of us just do what we saw our parents do or not do. Add some financial pressure to that, add some relationship challenges to that and add some trauma of car hijacking, stolen cell phones, drugs and alcohol to the mix and we have a pot of violence taken out on the most vulnerable – our children – without actually thinking about it or wanting to do that, it just happens... We abuse and beat up our children and we say "how can they have all the rights and we don't have any?" Let's get educated about these matters, let's understand what rights and responsibilities are and how they relate to us on a daily basis.



Children have the right to a safe and comfortable home.. and the responsibility to share in keeping it neat and clean.

I am finding myself in a space now of no longer feeling some sort of 'cootshie-coo', about all the tragedies that face us day in and day out – one horrific story after another – there's an anger of injustice inside of me that is rising and is not quellable. We have been very involved with Social Justice for the last couple of years and the ignorance I see amongst lay people, municipal leaders, community and traditional leaders, organisations and church leaders, when it comes to understanding the well-being of children and their rights and responsibilities, is distressing. None of us want to raise disrespectful and disobedient children, but my goodness, we also can't be raising children who will do all to our beck and call without thinking about the consequences. It's a fine line, but as adults we have to be versed with these matters – so that we don't perpetuate the cycles of violence and despair that we see. If we tell a child "just do what I say!!!", they learn that they have to obey adults no matter what they are told to do, even if it is to do something bad. I usually say that "we don't know what we don't know", so without

I want to say to everyone at Give a Child a Family: Thank you to the Trustees, for the time that you make to be available, sometimes at the drop of a hat, when needed; for the guidance and wisdom you bring, we really appreciate you all; the Executive, whom I admire more and more for their total and 143% commitment to the values and ethos of Give a Child a Family – working till they drop at times, (we know that is not healthy but... they just do!) – thank you; the Management who go beyond the call of duty in many situations; to every staff member, volunteers both national and international, I salute you all, for the passion that you have in the rescue, restoration and reintegration of the beautiful children who come and go at GCF. The empowerment, pride, respect and passion that the community workers and the family based care staff show to the families at risk, in our community is wonderful – you are a blessing to this District and we hear that from both the traditional leaders and the families. And our beautiful foster parents, who sacrifice a comfortable life style to take in and care for these children as if they were their own – what would we do without you? Our networking partners and stakeholders we are so proud to be working with you, from the municipality to other organisations in our district, province, national and international, Thank You!!!

Executive Director's Report

To the government departments who we rub shoulders with, we do appreciate you and although we don't always agree – we agree to disagree, but we are still mindful of the incredible challenges that each one of you face in your daily tasks and we want to pull this heavy wagon of child protection together. The generous sponsors, the long term relationship funders, the people who helped us get over our setbacks this year – we are so grateful for each and every one of you.

There are so many people to thank, but we also know that this work, this year and the past 25 years plus would never have been possible without a loving Father in Heaven, who is also passionate about Child Protection, who has given His all in the form of His son to make this possible for us... Thank you. God Bless you all.

It's not what we do, but the difference we make!!!

'Violence against children in South Africa – a national disaster'

2017-06-14 06:02 **maritzburg FEVER**

"This is not a problem that is going to go away. We need political will, increased funds and personal commitment from government to start to address the impact of this social disease."



Monica Woodhouse



GCF Executive and Senior Management



[INTEGRATED CHILD PROTECTION SERVICES]

[OBJECTIVE]

TO REACH COMMUNITIES THROUGH PREVENTION AND EARLY INTERVENTION PROGRAMMES, - THIS DEPARTMENT AIMS TO PROTECT, PROVIDE, AND PROMOTE CHILDRENS SERVICES IN THE COMMUNITY BY HELPDISK SERVICES, PROTECTIVE BEHAVIOURS IN THE SCHOOLS AND FAMILY BASED CARE SERVICES, INCLUDING FOSTER CARE AND WORKSHOPS, ALL TO EMPOWER CHILDREN, WOMEN, YOUTH AND FAMILIES FOR THEIR WELLBEING

Integrated Child Protection Services



In 2015 we were registered as a Child Protection Organisation and we did not realize the impact that this registration would have on us. We were doing the work in the community – but the unprecedented need of our communities, has been overwhelming. 2017 saw us having to step into the gap when some social services were straining under the pressure of lack of financial resources, over-work, huge caseloads, and just an overwhelming feeling of despair, for the types of cases needing attention. Only a small percentage of these cases hit the headlines, the rest had to suffer silently and hoped it would all go away. The question that kept ringing in our minds was “how can we make a difference?” ...

Growing Old is not for Sissies



Helpdesk

The purpose of our Helpdesk service is to assist families with their personal crisis, needing professional social work intervention and crisis management.

CASES WE DEALT WITH

Some of the cases we dealt with in 2017 included:

1. Personal crises involving children, youth and adults, conflict in families, material assistance (social relief), emotional well-being, adoption information, etc.
2. Home visits, where we conducted assessments, provided counselling and referrals to other government departments, in circumstances which needed ongoing intervention.
3. Follow-ups were conducted thereafter to ensure that people received the assistance they needed.

Helpdesk Summary



As we attend the War Rooms we are exposed to the incredible needs of the community. During mid-2017, there was a case reported in the area of Dumezulu (KwaXolo), where a very old couple was staying in a broken down house which was a problem for them during the rainy season.

It was reported that only the wife was receiving an old age grant and there was a problem with the husband's identity document. Despite many attempts of calls for help, there was none forthcoming. GCF assisted:

- The husband with the process of applying for a new ID.
- Food vouchers
- The Community Care Worker to find help for alternative accommodation for them.

Their lives turned around – the couple are now staying in their newly built house which was also partly furnished by the wonderful people that assisted. Although we are still awaiting the ID application outcome from Department of Home Affairs, we are overjoyed that the couple are now safe in their home. They have also started growing vegetables, in their own a garden.

Eyethu newspaper dated 16 March 2018 reported on this event.



Protective Behaviours

Protective Behaviours is based on **Two Themes, Three Core Concepts and Seven Strategies**. A **PERSONAL SAFETY PROGRAMME FOR PEOPLE OF ALL AGES AND WALKS OF LIFE**.

THEME ONE

The first theme 'We all have the right to feel safe at all times'

THEME TWO

The second theme 'We can talk to someone about anything no matter what it is.'

When someone asks me to keep a secret that makes me feel sad or afraid, or touches me in a way that make me feel unsafe, I will say NO, then I will GO and TELL someone on my network.

These lessons are held in schools, with teachers and pupils and also for the general public - training little ones how to protect themselves against predators.

It has been a privilege to meet so many children and adults, our aim being to teach simple ways of keeping themselves and others safe in the environments they find themselves in on a daily basis. PB has not only become a way of working for the Child Protection team in the organisation, but also a lifestyle.

The social work professionals and other staff at GCF have completed the Protective Behaviour (PB) Level 1 training, which has led to the following engagements:

The following have all completed the 10 PB lessons:

- The children placed at GCF Child and Youth Care Centre (CYCC) are taught these on an ongoing basis.
- Lorraine's School (3 classes),
- Bless Crèche,
- Good News Crèche and
- Siyaphambili Crèche, all located in the area of Margate.

The Foster parents in GCF's 5 support groups have been through the workshop during their monthly gatherings.

At GCF's annual forum for approximately 55 (298 members) foster families, PB has been learnt.

During school holidays, foster children and biological children from these foster families have also been equipped through very active and successful PB lessons.

Teachers at local crèches and local pre-schools were also educated in the philosophy of PB.

Outreaches have been done with the following schools in

conjunction with South African Police Services, Office on the Rights of Children UGU (Special Programmes), Department of Education, and Department of Arts and Culture:

- Paddock Primary School as well as
- Inkulu Primary School in Gamalakhe,
- 2 schools in Umtwalume through Sacred Heart CYCC, Mabhongweni Primary School in Paddock,
- Suid-Natal High school in Port Shepstone,
- several high schools for the Dumisa location in Umzinto as well as
- Duduzile Secondary School in Oshabeni and
- Xhonywa Primary School in Kwanzimakwe.

Protective Behaviour Summary



Foster Care

Foster Care has been ongoing at GCF for 15 years now as a means of ensuring that children are placed in families rather than in institutions. Recruitment, assessment, screening, training and the creation of a database of available foster families are all attended to – GCF tries to ensure that there are 25 families available at any time for children needing foster care, that can be accessed by all Case Managers in the UGU district.

GCF Foster Care services comes into play where all attempts to reunify children with their biological families have failed. Children are only placed into Foster Care once there is a Court Order issued to that effect.

11 Families were screened and trained in Foster Care Parenting, and placed in the Foster Parent database.
24 Suitable families were available for Foster Care during 2017.

Two children were placed from the GCF CYCC – and 3 children were placed from other CYCC facilities to our GCF foster families.

HOLIDAY PLACEMENTS

GCF provides holiday placements for children in the UGU district as some children do not get a chance to visit their families, or may not have families – or they have been in an institution for an extended period of time, and they need to be exposed to family life – so arrangements are made by GCF with the case managers to facilitate these children being placed with foster families during school holidays. This is a great way for both the children and the adults to connect without any pressure, which sometimes leads to long term foster care for the children.

As a result, two families from GCF's trained foster parents database opened their homes to host these children during the holidays and a total of 5 children were placed with the families throughout the year.

SUPPORT GROUPS

Once a family receives a child, the family is referred to a support group in the area.

Five groups exist in different communities and members meet each month. A total of 43 parents participated in groups by the end of 2017. These parents discuss different topics – they share advice and support each other to ensure that children placed in their care receive the help, care, love and nurture they need.

FOSTER CARE FORUM

Annually, we host a forum where our foster parents come together, meet each other, share ideas, have fun with their foster children as well as enjoying ongoing training on relevant issues. In 2017, 250 foster parents and children came to enjoy the day, GCF issued each family with a fruit tree, in commemoration of the 25 years GCF has been in existence. Spur kindly sponsored the meal.

FOSTER CARE TRAINING FOR PROSPECTIVE PARENTS

The two Foster Care trainings sessions were conducted in April and November 2017.



Bandile's way home

Bandile* was still a toddler when he was placed with one of Give a Child a Family's foster families. His background was like many others. The mother had disappeared, leaving the child with someone in the neighborhood, who was not really keen on taking parental responsibility. The area social worker was contacted and the toddler was brought to the GCF CYCC (Child and Youth Care Centre). As time went by and the investigations around him did not lead to any permanent solution, the foster care route was the only way to go.

The little boy bonded fast with the new family. He quickly developed a belonging and was just like any other child in the household. He was seen, heard and loved. He went to school, had friends and interests. Bandile always knew he had another birth mother, but did not really think about it until the biological mother suddenly returned several years later, promising that her life change was permanent and that she would like her child back. The social worker wanted to give her a second chance at being a good parent. Bandile was excited to get to know his long lost mother, and agreed to move back to her.

Within a year the news reached us. He was back with his foster family. When the mother failed him, she sent him to live with relatives he did not know, but he knew there was still someone out there, loving him, praying for him, longing for him. This amazing Foster Mother was willing to welcome him back with open arms, when that was the only thing Bandile wished for.

Today, Bandile has readjusted back into his beloved foster family. He is a positive and driven teenager, who is sure of where he belongs now, forever with his beautiful foster mother and family. He knows that blood is not necessarily thicker than water; he loves his foster siblings and the family love him in return.

This story reminds us of the saying "If you love someone set them free, if they come back they are yours, if they don't they never were". As Foster parents that is the risk of loving, they sometimes have to let go, as painful as that may be, but many times the love does come back...

(*not his real name)

Social Work Services

As a Child Protection organisation, GCF social workers have a very important role to play, transforming the lives of vulnerable and at risk children and their families. Social workers have the capacity to listen and empathise, make ethical and intelligent decisions and form helpful lasting relationships, which is at the heart of the job. It is important to point out that social service professionals must transfer their knowledge and skills to other individuals who have the same passion for helping people in need in our communities. GCF has seen a disintegration of society all round, to the point that even social workers are disheartened and in despair at times, because the services that need to be rendered are just not available.

SOCIAL WORK STUDENTS

Five student social workers chose GCF as the venue for their practical training. These students were from different South African universities. They had an opportunity to learn about social work services in both CYCC and community environments. The scope of various aspects of the work is of great benefit to them as they experience the holistic services of GCF.

"I felt so happy to be part of the GCF team. I have grown as a professional and I hope that one day I can make them proud that they had given me this opportunity as a student."

"I have learnt so much from this team. I was given many opportunities and loved being part of the trainings, which will also help me as a parent."

SOCIAL WORKER FORUMS

Four Social Work Forums took place with a total attendance of 136 social service professionals from both the non-governmental and government departments. During these forums, the social workers had an opportunity to engage with one another, discuss challenges and strengthen support channels amongst themselves. The social workers also have the opportunity to unwind, being refreshed by the addition of a little bit of fun in order to help them de-stress from the challenges they face in the daily routines of their respective offices. Invited guest speakers gave motivational talks and words of encouragement. In March 2017, we were lucky to have Doctor Scholastica Omondi from Nairobi, Kenya as a speaker. She is a retired Supreme Court Judge and is currently a lecturer in the Faculty of Law at the University of Nairobi. In her speech, she shared a lot about her challenging upbringing which encouraged her to focus on the journey towards making her the judge she is today. She inspired a lot of social workers at that Forum.

SOCIAL SERVICE MANAGERS AND SUPERVISORS FORUM

GCF social service professionals really felt the need to connect with the managers/supervisors from different offices; to come together and discuss challenges, share ideas, and align services for improved work with the families and children of the UGU district.

SOCIAL SERVICES PROFESSIONALS

As Social Services Professionals there is a SACSSP requirement to do CPD (Continuous Points Development) training. All GCF Social Workers and Social Auxiliary Workers participate in the CPD sessions provided for them.





[DEVELOPMENT DIVISION]

[OBJECTIVE]

TO DEFINE, DEVELOP AND DEMONSTRATE TO COMMUNITIES IN THE UGU DISTRICT – THROUGHOUT SOUTH AFRICA AND EVEN AFRICA THAT WE, AS AFRICANS, ARE ABLE TO SOLVE OUR OWN ISSUES WITH RELATIONSHIPS, ASSISTANCE AND MENTORSHIP PROGRAMMES DEVELOPED BY GCF. TRAINING, DIALOGUES AND WORKSHOPS ARE PROVIDED IN GOOD GOVERNANCE, ORGANISATIONAL CAPACITY BUILDING, TRAINING OF TRAINERS, SOCIAL COMMUNITY DIALOGUES, SOCIAL JUSTICE, CPD TRAINING FOR SOCIAL SERVICE PROFESSIONALS, PARENTING FOR LIFE COURSES, AND YOUTH DIALOGUES

Local Development

In January 2017, GCF was appointed as a Sub-Recipient in the USAID funded ReACH Programme for the Ray Nkonyeni Municipality. The implementation of this project was focused on:

- 6 identified Wards within the Ray Nkonyeni Municipality.
- 3 668 targeted beneficiaries in total made up of
- 1 834 Caregivers and
- 1 834 Adolescent girls.

Due to the short timeframe and large number of beneficiaries, the capacity of the Department was increased with the hiring of 38 additional staff for the implementation period. Although the programme was very intense in nature, GCF successfully achieved its allocated targets, and through the programme GCF learned some valuable lessons and made new connections to support us in the development of our work.



National Development

ONE CHILD ONE FAMILY PROJECT - GAUTENG, EKURHULENI

Since June 2016, GCF has been in partnership with Hope and Homes for Children to pilot a programme on the Deinstitutionalisation of the Child Care Systems through the One Child One Family pilot project.

The pilot targeted 3 temporary Child and Youth Care Centres (CYCC's) in Gauteng at Ekurhuleni:

- Don Materra CYCC with the capacity of 75, admitting children from 13 – 18 years of age, situated in Edenvale. This CYCC is managed by the Government.
- Igugulethu CYCC with the capacity of 75, admitting children from 0 – 12 years of age and is situated in Boksburg. This CYCC is managed by the Government.
- St Francis CYCC with the capacity of 35, admitting children from 0-6 years of age and is situated in Boksburg. This CYCC is managed by an NGO.

GCF's role in this programme, together with social workers, was to help assess the children at these centres. All the children admitted to the CYCC's were assessed in order to determine the:

- Reasons for admission
- Family involvement
- Valid court orders
- Psychological needs
- Educational needs
- Children's physical and emotional developments
- Future placements
- Stumbling blocks, if any

While the children and their families were assessed, the team also conducted resources mapping to determine the availability and access to resources in the communities of origin. This is to assist with the planning for the placement of children in the communities, to ensure that children will be safe when they are reintegrated.

Monthly meetings with the Gauteng Provincial DSD were held in order to give feedback on the findings of these assessments and future planning.

Social service professionals were trained and mentored on different courses to equip them with adequate knowledge to ensure that children's needs are met while at the CYCC's and to assess the needs of the families.

Isibindi mentors were recruited in order to assist with the family assessments and they were also trained on the tools.

GCF participated as part of in-service training staff development to Hope and Homes SA, training on team development in January; conflict management training was held in February.

The social service professionals working with the children at the targeted CYCC's were trained and mentored on:

| TRAINING | DATES | VENUE | NUMBER OF PARTICIPANTS |
|--|------------------|--|------------------------|
| Active Family Support | 28 – 30 Aug 2017 | Don Materra | 45 |
| Active Family Support | 4 – 6 Sep 2017 | Igugulethu | 67 |
| Active Family Support | 11 – 13 Sep 2017 | St Francis | 56 |
| Assessment of prospective foster parents | 2 – 6 Oct 2017 | St Francis | 37 |
| Assessment of prospective foster parents | 23 – 27 Oct 2017 | Igugulethu | 38 |
| Active Family Support | 7 – 9 Nov 2017 | National Association of Child and Youth Care Workers offices at Braamfontein | 25 |

NOMVUYI ATTENDED:

- The Advocacy training on 28-30 March 2017, in Kigali (Rwanda) hosted by Hope and Homes for Children.
- The launch of the One Child One Family project on the 9th of June 2017.
- A Symposium on 'Keeping the Girls Safe at Schools' hosted by Nelson Mandela Children's Fund at Wits University.
- The National Lotteries Beneficiaries Indaba on 21-22 September 2017 in Boksburg.
- The TAA Steering Committee and Partners meeting on 12-14 November 2017 in Kigali (Rwanda).



Finally going home to my family

GCF played a big part in the reunification services of a child with his grandparents at KwaNzimakwe, KwaZulu Natal all the way from Ekurhuleni, Gauteng.

Cindy* went to Johannesburg to get work, all the way from KwanNzimakwe. She got pregnant and gave birth to a beautiful baby boy Olwethu*, but Cindy's parents were not aware of the pregnancy. However, circumstances unfolded which resulted in Olwethu being removed from the mother's care and admitted to Igugulethu CYCC in Boksburg. Social workers investigating

Olwethu's case manager traced the family and months later found them all the way at KwaNzimakwe, but there was a challenge. Olwethu was only one year old, and even though the grandparents were happy to care for Olwethu, they had no means to fetch him and he was too young to travel by himself. There were also policy challenges surrounding which province would be responsible for payment of the movement of the baby, and while this debate continued, it further delayed the case and placement of Olwethu. The case was finalised in June 2016. Igugulethu CYCC Social Worker approached GCF and GCF sponsored and assisted with a bus ticket for the grandmother to fetch her grandchild in Boksburg. The family was transported from KwaNzimakwe to Igugulethu CYCC for introductions and the child was placed back with the family in June 2017. Tears flowed at the reunion and Olwethu refused to be cared for by anyone else. He was happy to be with his 'Gogo'. Through this intervention, Cindy found the courage to visit her parents after the placement of the child. There was reconciliation and the whole family was restored and all are happy to be reunited. GCF wants to see "Children in Secure Families – it's where they belong."

(*Not their real names)

Africa Development

INTERACT AFRICA - SOCIAL JUSTICE

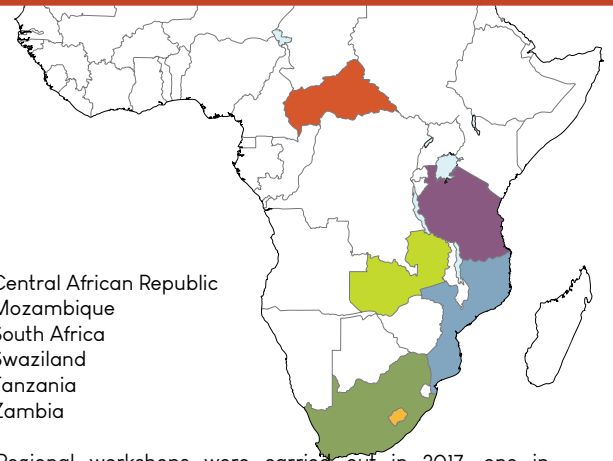
AIM - Safer Communities for Children. Social Justice can be defined as Fairness or Reasonableness in the way people (including children!) are treated.

TARGET - church and community leaders, child and youth care workers and leaders, educators, NGO leaders, traditional leaders, ward councilors, health workers, police, parents and community members.

NB. FOR NON-FAITH BASED ORGANISATIONS (E.G. EDUCATORS, COMMUNITY LEADERS) THE PROCESS IS VALUE BASED RATHER THAN SCRIPTURALLY-BASED

Level ONE is compulsory for all, Level TWO is for those who want to facilitate the Social Justice Workshop and Level THREE is the follow up on the Implementation of the Policy and Programme

The Social Justice Project is implemented in partnership with Interact and is aimed at introducing and building the recognition, understanding and implementation of children's rights in faith based organisations and involves partners from 6 African countries, namely:



1. Central African Republic
2. Mozambique
3. South Africa
4. Swaziland
5. Tanzania
6. Zambia

Two Regional workshops were carried out in 2017, one in Johannesburg and one in Nelspruit.

(1) - The focus of the Johannesburg workshop was on the implementation of Social Justice for Educators within the Interact partner organisations.

(2) - The second workshop was focused on further equipping the Child Protection Officers and facilitators within the organisations.

Two follow up visits were carried out; 1 to Zambia in September and 1 to Swaziland in December.

It was gratifying to see the progress being made and the impact the project is having on the lives of the children it touches.




161
Number of church leaders trained

613 439

Number of children influenced

KENYA OFFICE

Real growth has been experienced in the Kenyan Office, with Grace Mwangi successfully promoting the GCF philosophy and model in many areas.

We were privileged to host a delegation from the Child Welfare Society of Kenya for a site visit at GCF in Margate at the beginning of the year. We were able to provide them with some real insight into some of the challenges that they face and hope to further the relationship in coming years.



C.W. Kenya site visit

We enjoyed a visit from Doctor Scholastica Omondi from Nairobi, Kenya. She is a retired Supreme Court Judge and is currently a lecturer in the Faculty of Law at the University of Nairobi.

Grace continued to build on the work with Pumwani Maternity Hospital. This programme has resulted in a decrease in abandonment of babies, from 119 abandoned babies recorded in 2016, to 63 recorded in 2017. She has also conducted Prevention and Early Intervention sessions in Waitthaka, Gatundu and Eastleigh.

As a result of the growth in Kenya, GCF has taken the decision to register as an International NGO working in Kenya. We anticipate that this process of registration will be completed in 2018 and will pave the way for even further advances in the region!



GCF Kenya – Family day

A real highlight of the year was the work that was done with SOS Children's Villages Kenya and Tanzania. Grace provided reintegration and reunification training to staff at several locations and this work has had a massive impact on the children in these areas.

CONSULTANCY WORK

Mozambique – Work continued throughout the year on the Legal Registration of the Matsatse Centre as a Temporary Safe Care Facility in Chimoio. This has been a long process but a worthwhile one, and we eagerly anticipate the finalisation of this in 2018.

Rwanda – Ongoing communication with the Hope and Homes Office in Rwanda was maintained through the year and the TAA (Transform Alliance Africa) meeting in November was attended by both Nomvuyi Sukantaka (who is a Steering Committee Member) and Steven Wetton. At this meeting we were asked to present the South African Advocacy Strategy on De-institutionalisation to be included in the overall TAA Advocacy strategy.

Faith Based and Community Liaison

On a sad note, Henry Rinkwest, the Faith Based and Community Liaison, tendered his resignation and we bid him and his family farewell on the 28th June as they relocated to Sweden. In the interim, the Community Liaison function was absorbed into the ReACH programme and the Faith Based functions reverted back to Monica Woodhouse and Steven Wetton, with the wonderful volunteer assistance of Nico Leonard, previously from Operation Mobilisation and AIDS Hope in Mamelodi – a man with a wealth of experience and knowledge in community work.

2017 was a tough year for most NGO's, both in South Africa and on the continent in general, and GCF was no exception. It was therefore really gratifying to see that even in the current climate, the work being done by the Development Division remains relevant and needed, and is indeed growing and impacting the lives of many children in Africa. There will be more to come in 2018.





[CHILD AND YOUTH CARE CENTRE (CYCC)
OPERATING AS TEMPORARY SAFE CARE (TSC)]

[OBJECTIVE]

TO RESCUE, RESTORE AND REINTEGRATE CHILDREN BACK INTO THE COMMUNITY PROVIDING HOLISTIC TEMPORARY SAFE CARE SERVICES INCLUDING REUNIFICATION SERVICES FOR CHILDREN AWAITING PLACEMENT WITHIN A SECURE FAMILY

Each year social workers have to remove children from their families. They do so only if there is reasonable proof that the children would be exposed to greater risk if they should remain with their families. These children are placed for temporary safe care at the GCF CYCC and it is our privilege to assist them during their time of distress. The purpose of the children being placed is that they, and their families will receive help, and in the case of abandoned children, effort is made to try and find an extended family member. Whilst further investigation take place, the children are safe. It is interesting to see that as further and more extensive work is done with the families, many more children are able to be re-unified.

Child Care Services

47 Children were carried over from 2016

44 were discharged, with a total 48 admissions.



95 is the total number of children cared for in 2017

At Give a Child a Family, we strive to provide child-friendly services for their wellbeing for all children in our care. We ensure their immediate needs are met upon admission and provide continuous interventions according to their individual specific needs throughout their stay in residential care.

The babies and toddlers in the nursery under 3 years of age, have their own Nursery ECD programme, where they learn through play and activities. The programme focuses on activities with the children to develop their gross and fine motor, cognitive, speech and language, social and emotional, sensory, life, and vestibular and proprioceptive skills.



The older children go to school during the week and in the afternoon they take part in various activities e.g. homework, Bible club, group discussions, sports activities e.g. soccer, Tai-bo and Zumba. Children also have time for free play and quiet time when they like to read, write and draw.



Life skills forms an integral part of the children's programmes from an early age, for example hygiene, sharing, good manners, and age-appropriate chores.

On some weekends and during school holidays, the children went on outings to the beach, movies, ice-skating, the mall, animal petting farms etc, apart from enjoying other activities such as games, arts & crafts, fashion and talent shows, sports etc

CHILD AND YOUTH CARE WORKERS

Halfway through the year, Nonhlanhla Zondi joined the team as the Childcare Coordinator. On most Wednesdays, child care workers are trained in the basics of childcare, healthcare and report writing. A hand-over process is done professionally for communication purposes relative to each child.



Child care workers also attend weekly Case Conference reviews for the children placed in their care. The issues and needs of each child are of paramount importance and case reviews are conducted using this information, always looking at the best interest of the child.

Events celebrated by the children during the year brought them much joy, as well as the staff.

- Human Rights Day celebrated at Hibberdene, where our children were playing freely. Games were provided and also socialising with other children who were invited to the same venue.
- Valentine's Day - teaching and spreading the word of love to our young people - Jesus who loved us, and we also have to love one another. Children wrote lovely messages to the CYCC workers.
- Heritage Day with the children was lovely as they were involved in indigenous games. They were able to learn about the culture and traditions of the past and the symbolism of all those things. There were also culture specific tasty food treats to enjoy.
- IBV (International Bank Vaults) - Every year they organize a Children's VIP Day. This is usually attended in Durban by the children, who go all the way to Durban in a bus, and have lots of fun with hundreds of other children. They receive caps, tracksuits, t-shirts, bags, and lots of lovely goodies. They have lots to eat and drink and then travel home very sugared up, which for one day is totally ok. The children really appreciate it - I am not sure of the workers though... ha ha!!!



Residential Social Work and Therapy



GCF has a residential social worker who is the liaison between the external case manager, the family and the child. Her role is assessing and ensuring the well-being of the child is taken care of at all times. She also conducts home visits with the child where possible, and drives many kilometers, going the 'extra mile' beyond her call of duty. Many hours are spent at court and with case managers reviewing and discussing each case and trying to manage the movement of the children, so that they do not stay out of a loving family for longer than they need to.

These refer to:

REUNIFICATION SERVICES

- Home visits (day and weekend) were undertaken with children in preparation for reunification with respective families and this was found to be effective.
- Case reviews were conducted with case managers to discuss children's cases and a suitable way forward.
- Case conferences convened on a weekly basis to discuss everything pertaining to children.
- Family case conferences were also conducted to determine a successful placement.

HOLIDAY PROGRAMME

Holiday programme was a success, being coordinated by the social and therapy department, CYCC and Resource departments, to ensure the children enjoy the best holidays ever!

These included:

- Movies at the Cinema sponsored by Ster Kinekor
- Beach outings
- Ice skating
- Just visiting malls - getting out and seeing life outside of the walls of GCF.
- Hiking
- Visits to nature reserves
- Visit to the Crocodile Farm

REFERRALS

Due to the extent of trauma and disruption in the child's life there are children who have to be referred to other service providers for further intervention. These referrals are usually to local private Psychologists, Childline and Therapy services. There is so much more that GCF would want to do to help these children but as resources are limited, we have to do the best we can, with what we have.

THERAPEUTIC SERVICES

Therapeutic services are the domain of our residential Therapist assistant, who is quite proficient in dealing with the children who come into the centre. Some of the therapy is done individually if it is in the best interests of the child. The following type of work is done with the children:

- Assessments - on arrival and throughout their stay, if there are changes in their story, or development with family, etc.
- Emotional awareness - helping children firstly to identify their emotions and then how they respond to various situations they land up in; and how to build up overall resilience.
- Anger management - this is the constant management of adverse feelings which spill over into their school work, their behaviour and their relationships, both with the Child Care Workers and their peers.
- Family meetings and conferences - these are conducted as

often as possible.

- Bereavement and grief - many children have never had the opportunity to grieve their loss and as emotions are discussed, this becomes evident, and they're given the opportunity to appropriately deal with their pain and loss. Some are even physically taken to the graves of their mothers. The creation of a memory box is also a part of coping with life as a result of the loss.
- Reunification preparation - this work is done with children weeks before returning home in preparation of the fact that they have changed a lot and that they have now things in their "backpack" with which they can help their family and siblings.
- Foster care preparation - special preparation is undertaken with children going into foster care as they have had some home visits and in response to the changes that will take place.
- HIV and Aids - some children have contracted HIV and Aids due to being raped, this requires very special care and therapy.
- Physical, emotional and sexual abuse - these cases are dealt with sensitively, using much care and understanding.

GROUP WORK

There are also children who experience Group Work really helpful, as they realize they are not the only one with a problem and that their difficulties are similar. Group Work allows children to be empowered with knowledge and skills to protect themselves when faced with a problem, to express their feelings in the right manner and provides life skills that help them relate well to the people they live with as well as being just an opportunity to talk about their issue. The groups are divided up as per the need of the children.

AFTER CARE SERVICES

After the child has been placed in the care of the family (reunified), after care services are rendered to ensure that the child and family have settled in well subsequent to a removal.

School visits are also included to check on the performance of the child.

Children are also able to share how things are going.

At times there is a need for services like social relief, school uniforms, and any other matters that are outstanding to help improve the family circumstances.

Early Childhood Development - Happy Days School

Children at GCF will receive the best care possible for them, which includes ECD services for the 3-5 year olds.

However, some children come who are older and do not fit into mainstream classes at school. The schools are not geared for them, and these children are often labelled "troublesome", "lazy" or "naughty", when they actually may have learning disabilities. As GCF does not believe that we want to leave anyone behind, there is provision made for them in various ways where we often go out of our way to assist these children.



GCF provided education for 11 learners at the beginning of 2017 and by the end of the year, there were 15 learners. This includes all children from Brain Booster programme to Grade R, remedial and interim programme. The children who are most active in the classroom also go out for learning activities such as the library and other educational outings.

As a teacher one has to be prepared for happy and sad moments.... A sad moment towards the end of the year, was when a grade R boy, aged six, lost his mother. Sharing this experience of such deep emotions in a little boy crying for his lost mom, the



teacher picked him up and put her arms around him and both were in tears, it was a very special moment for both of them. Fortunately, the boy was helped by the GCF Therapy Assistant. This boy completed his Grade R successfully and was able to be promoted to Grade One (1).

The Grade R Graduation Ceremony took place with the staff at GCF present. It was a great moment to see the Child Care Workers so excited that their little ones were graduating.

We were blessed to have three international volunteers who dedicated themselves to assisting with school activities.



Education - Community Schools

Community integration while children are in our care, is very important to GCF.

Sending those who are capable of going, to community schools in our area is one of the ways we try to keep things as normal as possible for the children. From Grade 1 up, children are sent to various Primary Community Schools, such as:

- Lorraine Development Centre in Margate,
- Margate Primary,
- Sithembinkosi Primary in Gamalakhe,
- Suid Natal Primary in Port Shepstone, and
- Port Shepstone Junior Primary.

Children are assisted with homework in the afternoons by their Child Care Workers, and those in need of subject remedial intervention also receive it with the help of Teacher Thembi.



Unfortunately, many children going to community schools lack the necessary foundational skills, especially in reading and writing. This creates challenges in their behaviour, their school work and relationships, the schools are not geared to cope with these challenges – the need for remedial teaching is great, but there is a huge cost to this service which the schools don't provide. Much attention is needed to make sure these children receive adequate specialized remedial intervention at school, and if not, then at GCF.

Healthcare

All residential children received preventative and curative healthcare throughout the year. Within the first few days after admission, all children will be physically examined and a thorough health assessment will be done. Children who were neglected, showing visible signs and symptoms of illness, or with any other health risk factors, will receive their assessments within the first day, and appropriate medical intervention will take place. An individual holistic health treatment plan is initiated for each child according to their specific needs. It is of the utmost importance that children receive adequate healthcare that is appropriate to their individual requirements. Many children have chronic, often serious, medical conditions that needs daily intervention and management.



Children who need specific specialized health interventions are taken to the government clinic or hospital. We are also blessed to have a private GP and Paediatrician whose professional services we can utilize for the children, if need be.

Apart from personalized, specialized healthcare for each child, the children also receive routine health interventions, e.g. immunization, Vitamin A, deworming and RVD testing.

We also, under the direction of dieticians, supply children with special diets for various health conditions e.g. epilepsy, diabetes, malnourishment, burn victims or disability etc.

Child & Youth Care Workers receive Health training throughout the year on various health related matters e.g.

- Guidelines for giving medication,
- Observation of symptoms & signs and procedures to follow,
- Therapeutic needs of children's disabilities,
- First aid,
- Hygiene and universal precautions,
- Milestone development,
- Reporting and record keeping, and
- HIV and AIDS, as well as TB management.



| | |
|-----------------------------------|-----|
| Health assessments done | 46 |
| Internal healthcare interventions | 408 |
| External healthcare interventions | 479 |
| HIV testing | 37 |
| Immunizations/Vitamin A/deworming | 93 |
| Dental treatments | 115 |
| Hospitalizations | 6 |

When discussing the re-integration of some children, it is of paramount importance that in cases of chronic or serious illness or special needs, the parents, caregivers, and/or guardians are included in the child's healthcare and holistic wellbeing before they go back home.

Parents / caregivers receive training on how to deal with these health issues to increase their parental responsibility for taking care of their children's health adequately upon the child's return.

Children also attend health and therapeutic appointments as per their individual needs.

Special Needs Programme

Our Special Needs programme consists of children who have mental, physical or a combination of both disabilities. Children who are, at admission, severely developmentally delayed because of abuse, neglect and malnourishment, are also included in this programme. Many of them also have chronic medical conditions that require daily intervention and continual management.

Skill and milestone development, whether it is being able to hold a spoon, build a tower, sit unsupported on a chair, improved speech, learning how to count, crawl, walk, talk, recognizing colours and so forth, is the focus of our Special Needs Programme. One milestone at a time, regardless of how long it takes. Every little achievement is celebrated with great joy.

Physical exercises with the children, to ensure range of motion, stretching and flexing, adequate movement and prevention of debilitating contractures are also of utmost importance. Through play, repetition, speech, occupational and physio therapy, all developmental areas are targeted e.g. physical, fine and gross motor skills, social and emotional skills, speech and language skills, cognitive skills, vestibular and proprioceptive skills as well as sensory skills. Specific children also benefit from Ozone therapy – they love the freedom the water gives them, this is a very therapeutic intervention that also enhances their general physical and emotional well-being.

We work in tandem with the occupational and speech therapists from the local government hospital.

Kim Nell, our developmental therapist from Umusa Community Projects, is doing wonderful work with our children here at GCF. Kim also makes sure that the Child and Youth Care Workers are trained in how to care for their children with special needs. Our children with special needs have developed in leaps and bounds because of the continuous love and therapeutic care received from Kim, their Child Care Workers and the international volunteers.



Children with permanent disabilities will remain on the programme for the duration of their stay at GCF. Children with severe developmental delays will be released from the programme as soon as they have reached their appropriate milestones. These children are often abandoned and families never come to light; those that do are taught and encouraged to care for their children and in some cases children have been successfully placed back with the family with help and support where needed. Sadly, the children who have been abandoned have had to stay and we somehow become a family for them, but we look forward to the day that they could find “someone who is crazy about them.”





[INTERNATIONAL VOLUNTEERS]

[OBJECTIVE]

TO GROW FRIENDSHIPS WITH MUTUAL BENEFITS – SERVING EACH OTHER AND WORKING TOGETHER FOR A BETTER ORGANISATION.

International Volunteers

The work of International Volunteers has been on the agenda of many NGO's, especially with regard to children and services provided by volunteers – there has been much discussion around this issue and the terminologies are explained below:

VOLUNTOURISM:

Travelers who volunteer short term while visiting while travelling.

It has been under much scrutiny lately and some organizations abroad strongly campaign against such practices at “children’s homes”, as this form of volunteering may be connected to illegal adoptions, trafficking, unrealistic contact with children where fake orphanages exist, for the purpose of coercing money from tourists, which results in unnatural/unhealthy/damaging connection with children.

VOLUNTEERING

- Giving skills for a set time
- Motivation
- Having a focus on the child or self
- Servant heart
- Emotional attachment to the organisation
- Processing through application, screening (including requested documents) and approval
- Participate in a volunteer orientation
- Completing an evaluation
- Goal setting
- Accountability
- Commitment
- Pay for stay
- Growing as a person
- Submit to a structured environment
- Willingness
- Ambassadors for GCF abroad
- Assist with the children, at a non-supervisory level.

GCF continues to use Volunteers as they are screened, trained and orientated and they are placed wherever there is a need within the organization. They stay for 3-6 months plus work where needed.



14 from Sweden



2 from Holland

Our volunteers come to serve in driving, cooking, sorting and assisting the child care workers with some extra hands and friendship.

One of the volunteers is studying to become a doctor and when he came back, he was a big help to the residential nurse in Health Care.

It was also special to watch volunteers build friendships with each other and subsequently stay connected, even after leaving GCF. Life at GCF can at times be very challenging for the volunteers due to differences in language, culture and world views. But talking about it and growing through these challenges makes them stronger. The volunteers were such a big help in driving duties, organizing extra activities and programmes for the children and assisting when they were on outings.

Some of them were very capable and assisted with the Early Childhood Development Programme.

One of the volunteers who comes back often, is a worship pastor and she loves playing and singing with the children. The children in turn, love it when she plays her guitar and can sing and dance!



One volunteer couple didn't only fall in love with GCF, but declared their love for one another. They became engaged on Leopard Rock at Oribi Gorge!

It was sad to have had no volunteers during December – only two visited for a short period. At that time of year, extra hands are needed and welcomed in all the activities of the holiday time. A big thank you to these precious people who give of their time and money to serve Give a Child a Family. We really appreciate our volunteers; they just bring in so much extra skill, needed hands and lots of love and compassion to make life better for each child during and after their stay here!



We were also very sad to say goodbye to Lynette Rinkwest who, together with her family, left for Sweden as missionaries. She had such a mother's heart for the volunteers and she was really loved by them all. We are so happy to have the services of Alma Leonard* who, together with her husband, developed the AIDS Hope Ministry in Mamelodi. They have now come to serve GCF with prayer, counselling and in whatever way they can assist. Alma is doing well in caring for the volunteers when they arrive – we are so grateful for that – caring for them during their stay and a worthy farewell too!



[SUPPORT SERVICES]

[OBJECTIVE]

TO PROVIDE SUPPORT SERVICES TO GCF; ALL OF THE INFRASTRUCTURE OF GCF, WHICH INCLUDES FINANCE, HUMAN RESOURCES, MAINTENANCE, LOGISTICS AND HOUSEKEEPING.

Maintenance

The maintenance team is responsible for maintaining four properties – CYCC, Lotto, Family Based Care and Praslin Flat no 6. The team perform a high standard of maintenance on buildings, projects and garden services. The team works strictly according to National Building Regulations.

The maintenance team undertook the following projects:

- Upgrade of the Lotto house to have 4 bedrooms.
- Upgrade and paint the Boys section.
- Start the building of new Volunteer accommodation across the dam next to the Lotto house. The project was unfortunately put on hold due to foundation problems and the intended location of houses, as well as the opportunity of a new proposal to buy the property across the road.

654 Maintenance requests received and 1007 scheduled tasks executed e.g. drain cleaning, fence monitoring and repairs, garden work, vehicles washed and checked, and which were not on the maintenance request list, were also completed.



Logistics

The driver ensured that the fleet of 12 vehicles were cleaned, serviced and well maintained. 398 inspections were done on the vehicles.

There were 4 accidents and 2 incidents related to our vehicles. We are grateful that there were no injuries - small bumps, scratches and pothole damage not included.

- The Nissan bakkie was nearly written off, but we managed to fix the vehicle with funds received from our insurance company.
- The Kia and Condor were written off due to flood damage on the way to Durban, which was a real disaster.
- The white Avanza was badly damaged in an accident, but was repaired by the insurance company.
- The silver Avanza suffered 2 accidents in one day.

By the goodness of Father God we received donations to replace both the vehicles which were written off due to the flood and we were able to buy two brand new Avanza 1.5 passenger cars.

Housekeeping

The housekeeping team was responsible for the sorting of donations, the cleaning of all the buildings, and the smooth running of the laundry.

22,856 tons of laundry was washed and ironed.
29,639 nappies were used.

A new washing machine was purchased.
Secondhand sales of donated goods generated R 12,159



Kitchen

The kitchen team was responsible for preparing food for the children, volunteers, and staff as well as catering for training and functions.

94,296 meals were prepared
5132 loaves of bread ordered



Occupational Health and Safety

Our General Intentions as in our OHS Policy are:

- To provide adequate control of the Health and Safety risks to employees, children, volunteers, service providers, visitors and others arising from our work activities;
- To consult with our employees on matters affecting their Health & Safety;
- To provide and maintain safe environment, buildings and equipment;
- To ensure safe handling and use of substances;
- To provide adequate information, instruction, training and supervision for employees;
- To prevent accidents and cases of work related ill-health;
- To maintain safe and healthy working conditions;
- To ensure the availability of expert health and safety advice;
- To review and revise this policy at regular intervals; and
- To provide the necessary resources to secure the above objectives.

The following training was held with the Staff of GCF:

- Hazard Identification Risk training
- Driver training
- Fire prevention training
- Evacuation training
- OHS Basic training
- OHS Representative training



77 Safety inspections were done by the Safety Representatives.

3 Fire drills, including an after-hours drill, at the CYCC



4 OHS committee meetings took place

23 Representative meetings as well as Info sessions were convened

3 Minor incidents were reported and 4 reportable injuries on duty.

Financials



STATEMENT OF FINANCIAL POSITION at

31 December 2017

| | Notes | 2017 R | 2016 R |
|--|-------|--------------------------|--------------------------|
| ASSETS | | | |
| Non-current assets | | | |
| Property, plant and equipment | 2 | 7 660 170 | 7 472 431 |
| Current assets | | | |
| Trade receivables | 3 | 920 265 | 944 922 |
| Cash and cash equivalents | 4 | 1 984 368 | 2 566 592 |
| | | <u>2 904 633</u> | <u>3 511 514</u> |
| TOTAL ASSETS | | <u><u>10 564 803</u></u> | <u><u>10 983 945</u></u> |
| FUNDS AND LIABILITIES | | | |
| Funds | | | |
| Trust capital | 5 | 100 | 100 |
| Accumulated funds | | | |
| - Funds representing fixed assets values | | 7 660 170 | 7 472 431 |
| - Unrestricted funds | | (614 476) | 255 583 |
| Total Trust Funds | | <u>7 045 794</u> | <u>7 728 114</u> |
| Liabilities | | | |
| Non-current liabilities | | | |
| Restricted funds | 8 | 2 397 897 | 2 947 345 |
| Long-term borrowings | 7 | 522 562 | - |
| | | <u>2 920 459</u> | <u>2 947 345</u> |
| Current liabilities | | | |
| Trade and other payables | 6 | 337 269 | 308 486 |
| Current portion of long-term borrowings | 7 | 261 281 | - |
| | | <u>598 550</u> | <u>308 486</u> |
| Total liabilities | | <u>3 519 009</u> | <u>3 255 831</u> |
| TOTAL CAPITAL and LIABILITIES | | <u><u>10 564 803</u></u> | <u><u>10 983 945</u></u> |

STATEMENT OF COMPREHENSIVE INCOME FOR THE YEAR ENDED

31 December 2017

| | 2017 R | 2016 R |
|---|--------------------------|--------------------------|
| Revenue | 7 142 966 | 6 906 728 |
| Other income | 5 327 599 | 4 170 371 |
| Total income | <u>12 470 565</u> | <u>11 077 099</u> |
| Operating expenses | <u>(13 710 277)</u> | <u>(11 620 259)</u> |
| Operating deficit | <u>(1 239 712)</u> | <u>(543 160)</u> |
| Loss on disposal of property, plant and equipment | (18) | (40) |
| Interest paid | - | (186) |
| Deficit for the year before capital recoupment | <u>(1 239 730)</u> | <u>(543 386)</u> |
| Capital recoupment | 557 410 | 103 035 |
| Net deficit for the year | <u><u>(682 320)</u></u> | <u><u>(440 351)</u></u> |

Human Resources

2017 was quite a challenging year due to two projects which resulted in the need of additional staff. The ReACH project brought a total of 38 new staff members and the SBCC project a total of 5. These projects were both on a fixed term basis and they both started and ended in 2017. A big Thank You to the colleagues of the Development Division and Child Protection Services who took the recruitment and interviewing upon themselves so that the Human Resource department was left 'only' with the administration, which included 43 new contracts, opening of personnel files, salary administration, closing of the files at the end of the projects and the UIF administration tasks.

During 2017, the HR department added an HR Assistant, Zanele Mbangi.

As GCF celebrated its 25th anniversary, the staff year-end function was a festive evening hosted at Margate Hotel. Thank you to the Marketing and Fundraising Department for arranging the event!



STAFF HEAD COUNT

| | |
|---|----|
| Beginning of the year | 72 |
| Appointment for vacancies, incl. 2 projects | 54 |
| Terminations, incl. 2 projects | 50 |
| Head count at year-end | 76 |
| Number of casual workers | 12 |

REASONS FOR TERMINATION

| | |
|-------------------|----|
| Resignation | 13 |
| Absconded | 2 |
| Contracts expired | 35 |

STAFF DEVELOPMENT

| | |
|----------------------------|----|
| Staff development sessions | 10 |
| Staff general meetings | 3 |
| Staff fun Team Buildings | 3 |

LONG SERVICE AWARD

| | |
|----------------------|----------|
| Monica Woodhouse | 25 years |
| Teresa Mkhize | 25 years |
| Thandiwe Sikobi | 10 years |
| Phumzile Hadebe | 10 years |
| Maria Hufner | 5 years |
| Anna-Karin Ohrnstedt | 5 years |
| Henry Rinkwest | 5 years |
| Bonisiwe Mkhize | 5 years |
| Mareli Schwartz | 5 years |
| Jan Oosthuizen | 5 years |

STAFF WELLNESS AND DEVELOPMENT TRAINING

| | | NO. OF ATTENDANCE |
|----------|--|-------------------|
| February | • Workshop Social Justice (In-House) | 18 |
| | • OHS HIRA Training (In-House) | 11 |
| March | • Communication Management for Child and Youth Care Workers (In-House) | 24 |
| | • Workshop Social Justice (In-House) | 22 |
| May | • Drivers / Fleet and Road safety training (In-House) | 12 |
| | • OHS Basic Training (In-House) | 8 |
| | • Workshop (Protective behaviors) | 32 |
| | • – Social Media (In-House) | 44 |
| | • Workshop (protective behaviours) | 38 |
| June | • – Jurisdiction (In-House) | 38 |
| | • Annual Staff Health check (In-House) | |
| June | • Performance Management Course | 14 |
| August | • OHS Basic Training (In-House) | 5 |
| | • Kitchen Health and Safety Training (In-House) | 6 |
| October | • Training Integrated Sexual Offences | 3 |



[FUNDRAISING, MARKETING AND SOCIAL MEDIA]

[OBJECTIVE]

TO INCREASE BRAND AWARENESS AND RAISE FUNDS FOR THE SURVIVAL, SUCCESS AND PROMOTION OF THE PROGRAMMES OF GCF.

Fundraising, Marketing and Social Media

As with many NPO's country wide, GCF felt the pinch of reduced funds across the board, from international donors to government funding. Some training prospects didn't materialize as expected and budgeted for; however, we continued to serve the community in the best way possible with the limited resources available.

We sadly said goodbye to our Fundraising and Marketing Manager, Samantha Podmore who had spent 4 years with us.

OSA Creative Marketing assisted us on a 6-month contract with social media, marketing and our 25-year event.

Irene Chetty joined the team on a contract basis to assist with the fundraising and Sneh Shangase joined to assist with the local fundraising as a fundraising assistant..

We focused on increasing our electronic footprint and added an Instagram and LinkedIn account to our GCF Social Media profile. The GivenGain fundraising platform has also been ongoing under the new guidance of Mareli Schwartz, and the support has been nothing short of amazing. We also added a Zapper payment system which we are now displaying on all our social media and marketing material for easy donor access. The planning of a new website also started in 2017 and should launch mid-2018.

We had a few very successful 'moments' during 2017:

- GCF was successfully able to secure two brand new vehicles, within a month of our vehicles being written off due to flood damage in Durban, thanks to our GivenGain and social media platforms and our long-term relationship of donors.
- The #GivingTuesday campaign, where we were approached by South Coast VW in their efforts to 'give back' to the community, due to well-timed social media exposure of the campaign.
- GCF almost doubled our followers on Facebook in 2017, which also contributed to the support we received for our day-to-day wish list items and initiatives, such as the holiday programme, the winter drive, pencils of promise, a new washing machine, new tyres, groceries, formula etc.
- The Christmas promise secured many much needed items, and Christmas presents for the children.

Due to the loyal sponsorship of Läkarmissionen, we were able to supply each staff member with a memorable GCF shirt to celebrate our 25 years of existence and service to families and communities in Africa.



INTERNATIONAL FUNDRAISING

We continue to go to Sweden and Holland where we meet up with various funders, sponsors, businesses and individuals. It amazing to see how "Little drops of water make a mighty ocean" When we evaluate, the givers, it blesses us to see that yes there are some Company's, some Funders, but we do not sniff at the small amounts that come in from the little old lady or gentleman, or the young child that says "I want to help, but this is all I have" they tell us that they feel it is so little, but they choose to give it anyway, this blesses us because we see how these amounts grow and helps us so much. Monica gets to feedback on the work that is being done here at GCF, discussing funding opportunities. Then there is the nurturing of current relationships and forging new relationships, always looking for new opportunities to speak, and create awareness.

Brenda Andersson, Heidi Woodhouse Schmit and Monica Woodhouse were VIP Guests at the Världens Barn Gala. GCF featured on the Swedish TV country wide for the evening of the 6th October 2017. A celebrity Doreen Månsson (she was the Programme Director for the night) who had been at GCF previously wanted GCF to feature at this Gala, and a TV crew together with herself came for the filming. It was a very touching clip of 4 minutes that gave GCF good exposure with much credibility together with Läkarmissionen. We are so grateful to the churches, schools, businesses, International Foundations that are open for GCF to do presentations. Monica gets to drink umpteen cups of coffee whilst informing and connecting - Thank you Sweden for your ongoing support.

The Swedish Association was launched for the benefit of the volunteers and people who want to give monthly with smaller amounts into an account and it does not cost them transfer fees. We are so grateful to GCF-Sverige for their assistance in this. We are extremely grateful for the friends that continue to support, pray and give, often sacrificially - these love gifts do not go unnoticed.

Vriendin van GCF Stichting is made up of a committee of friends of GCF who also raise funds through their connections, churches, and associates. Fun events are held and children also bring money to share their wealth. Monica spoke at a University of Utrecht to a group of students who were doing a Master Class, on Child Development, Churches, and meetings with International funders. We met with amongst others WildeGanzen, Johanneboda, and really had a good time connecting with all, Thank you dear Friends.

We want to acknowledge the fact that we are really grateful to God, for his faithfulness in enabling us not only to survive, but to prosper in 2017, as well as to our long-standing partners, friends, organisations and businesses, who continue to stand with us during the tough years - we are really thankful to you.



Donor Acknowledgement

What started out as a tough, dark year, finished with hope and gratitude. Although we gingerly move forward, aware of the ongoing challenges financially, but so grateful and thankful to God our Father for being our Jehovah Jireh through wonderful people.

Läkarmissionen, since 1999 you have walked with us, learning and growing together – FOREVER GRATEFUL. Thank you for stepping into the gap in 2017.

DSD, with all our ups and downs that we have gone through, we are still very grateful for 25 years of relationship.

Our Swedish Association, a new structure with beautiful old friends, you are all very special to us.

Friends of GCF in Scotland, you inspire us every year, thank you! You all work so hard and you're so compassionate, caring for the wellbeing of our children in therapy and special needs.

EFK Sweden, long before GCF were there, you were there. Since 1945, you have brought change and growth development to South Africa and we are so blessed to be a part of that.

Sackaios, our amazing beginnings have never ended, we are ever grateful for your heart for GCF and the children, and for helping us to be successful. Thank you for your assistance.

Fresenius Kabi, our health budget has benefitted from your CSI long before it was a requirement. We are so grateful to you, thank you!

DG Murray Trust, thank you for years of loyal relationship. We look forward to bringing change to South Africa together too. Thank you for the 'big picture' thinking and assistance with that.

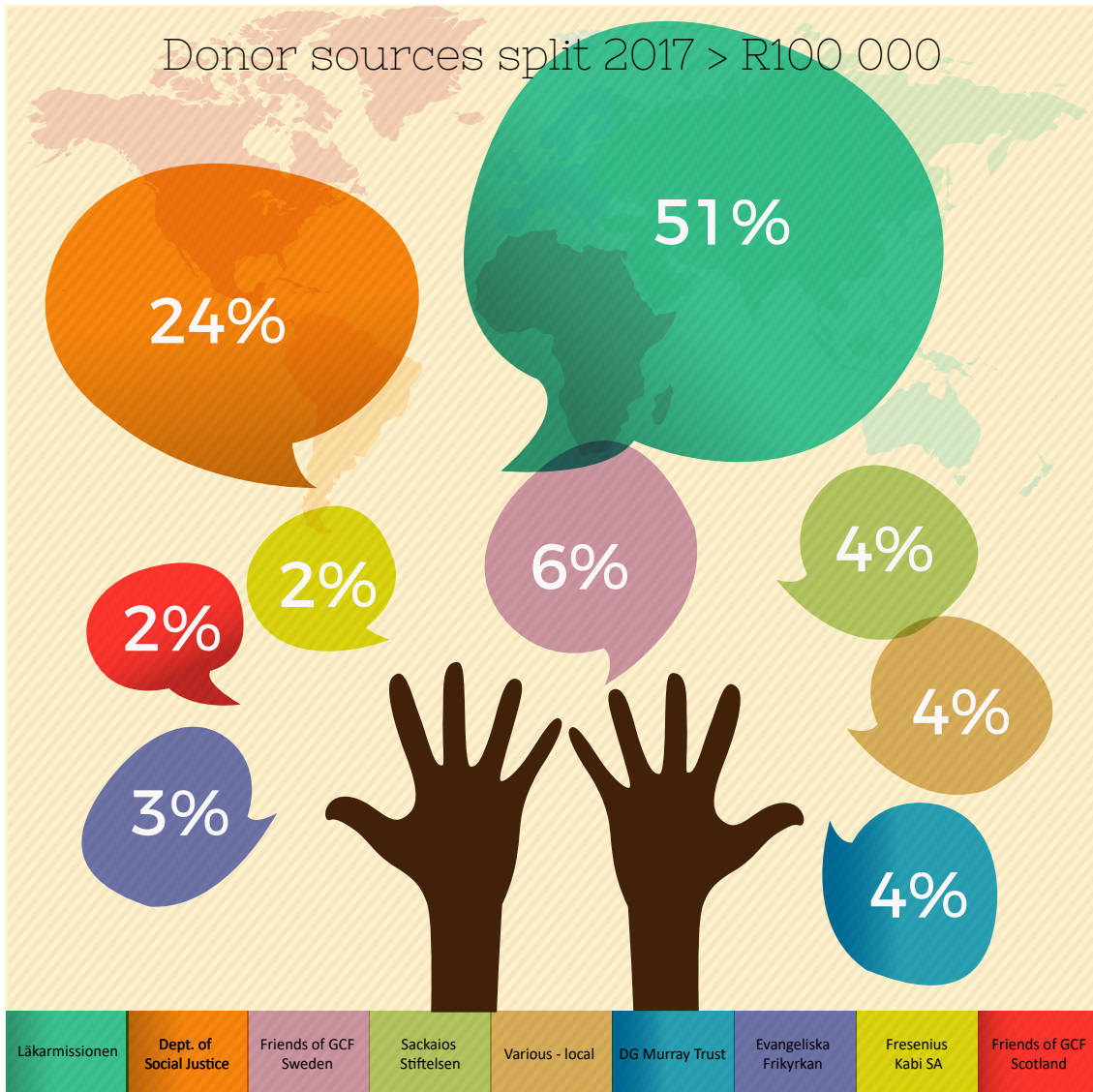


FRIENDS OF GCF SCOTLAND



social development

Department Social Development REPUBLIC OF SOUTH AFRICA





[NETWORKING]

[OBJECTIVE]

TO CREATE RELATIONSHIPS WHERE THERE IS SYNERGY, SHARING OF KNOWLEDGE, EXCHANGING AND GATHERING OF INFORMATION, AS WELL AS PROVIDING CONTACTS, CREATING IMPETUS FOR IMPROVING ALL THE PROGRAMMES THAT GCF OFFER, IN THE FORM OF TERMS OF REFERENCE, MEMORANDUMS OF UNDERSTANDING, PARTNERSHIP CONTRACTS OR RELATIONAL WORK.

Partners and Collaborators

Monica, George and Basil (GCF)
with Johan and Bo from Läkarmissionen

GCF continued to engage with stakeholders throughout the year and some of the notable highlights have been the engagement with:

- Abounding Hope Community Development
- Advocacy Aid – Patricia Martin – Strategic Planning for GCF (funded by DG Murray)
- Child Welfare – SA
- Christian Alliance for Orphans – (Advisory Council)
- DG Murray Trust on the SWAPP (Social Workers APP)
- District Task Team (DTT) (Operation Sukhuma Sakhe) (Department Social Development)
- Department of Arts and Culture – Protective Behaviours
- Department of Health
- Department of Justice
- Department of Social Development (DSD) – National Child Care and Protection Forum
- Department of Social Development – Gauteng Government – (GDSD) – CYCC Forums
- Gates of Praise International Church (GOP)
- Holiness Union Church
- Hope and Homes UK and SA – One Child One Family Project
- Ikhaya lethu Home of Love and Care – Deputy Minister – DSD
- Interact Africa
- Kenya GCF Office – Grace Mwangi,
Dr Scholastica Omonde
Kenya Child Welfare
- KwaZulu – Natal Provincial Advisory Council for Children (KPACC)
- Child Rights Advisory Council
- Kwa-Zulu Natal Civil Society Coalition (KZNCSOC)
- Mergon Foundation
- NACOSA – ReACH Project
- Nelson Mandela Children’s Fund
- Paddock Police Station (SAPS)
- Phenduka – Iselwe Impacting Lives PTY LTD
- Protective Behaviours Southern Africa – Constitution, Secretariat, and Registration.
- Rights of the Child UGU District – Municipality
- Save the Children – Workshops
- She Conquers Programme – Department of Health
- Siyamthanda Shelter
- Siyavuna Development Centre (SDC)
- Southern KZNCSOC
- Sunrise Rehabilitation Centre
- Thams Pather – Adoption Social Worker in Private Practise
- The Mercury – Childrens Holiday Home
- Transform Alliance Africa Partnership
- UGU Residential Care Forum (CYCC’s)
- UNICEF
- Umusa Community Projects NPC
- US Embassy – Durban (Collaboration)



KZNCSOC Executive Committee



GCF Executives with Mayke and Sinah from UNICEF





[CELEBRATING 25 YEARS IN SERVING
CHILDREN, FAMILIES AND COMMUNITIES IN AFRICA]

As there were financial constraints on GCF, it was decided to have just a small group of earmarked clients for the 25-year celebration so that we could still celebrate, but make the event pay and work for itself. We had a lovely day at the AGM, with 143 attendees on the 15th of September 2017 and the evening was a great time of connecting, with good food, fellowship and a time of reflection and remembering the past. There were also some past “children” who came and shared what GCF had meant to them - that they were forever grateful but so aware that family is really what it is all about. They provided some funny anecdotes and fond memories, and tears and laughter were mixed that evening. Everyone present was given the 25 Years of Tears, Trials and Triumph book. Thank you to all who attended and contributed to the evening, your contributions were much appreciated.



To round off the year, we had an evening at the Margate Hotel for the staff, at which they were able to celebrate with food, dancing and laughter, and simply connecting without thoughts of work. The Marketing team put together a great evening, with some very funny and worthy prizes, all voted for by the staff themselves.

STAFF PRIZES WENT TO:

- Lydia Gordon - Most Inspirational
- Vuyokazi Mpithi - Most Dedicated
- Yanga Flatela - Most Helpful
- Monica Nomlala - Most Laidback
- Nozuko Mtatambi - Best Dressed
- Jessica Moodley - Best Hugger
- Jessica Moodley - The Sweetest Employee
- Zanele Magade - Funniest Employee
- Thami Mzobe - The Strongest Employee
- Anna-Karin Ohrnstedt - Most Punctual Employee

Closure

This lovely report would not be complete without a word of closure...

There is no doubt that 2017 was probably one of the toughest years of the last 25. While we were, as always, spinning our wheels with effort, the Trust, Executive and Senior staff were silently eating bags of salt, in the knowledge that things were very tight. But the old adage kicked in - “when the going gets tough.....” and together, with the exceptional help of loyal funders and friends, we pulled the train out of the mud and back onto the track, invaluable lessons being learned along the way.

And so into 2018 - with prayers of thanksgiving and the wind at our back..... we can..... face the future because God is in our future.

Thank you everyone – you are invaluable!

“Great things in organisations are never done by one person. They are done by a team of people”

-Steve Jobs-

GCF VISION
Children in Secure Families

GCF MISSION

- **PROTECT** children by placing their best interest at the centre of all GCF programmes.
- **PROVIDE** communities and organisations with skills and competencies to ensure a nurturing and safe environment for children.
- **PROMOTE** temporary safe care for orphaned and vulnerable children with a focus on family based care as an alternative to long term institutionalisation.
- **PURSUE** our commitment to be a quality service provider; capacity builder and mentor; innovator and agent of change.

GCF COMMITMENT STATEMENT

GCF acknowledges that various stakeholders play a role in providing an effective Child Protection System and that holistic service should be available to vulnerable children and families at risk.

GCF provides family strengthening, foster care, support, reintegration and child protection programmes.

GCF promotes and lobbies for deinstitutionalisation of children and institutional care only as a last resort whilst community family based care options for children are pursued.

GCF fulfils its role as capacity builder and mentor by training like-minded organisations on the child protection process and good governance.

Make a difference - make a donation

www.givengain.com/c/gcf/campaigns

NPO No: 004-524
Trust Reg. No: IT 5570/1992/PMB
PBO No: 18/11/13/1118

Banking Details:

Account name: Give a Child a Family
Bank: Nedbank
Account no: 1398 047 244
Branch: Port Shepstone
Branch code: 139828
Swift code: NEDSZAJJ

Tel: +27 (0) 39 317 2761
Fax: +27 (0) 39 317 2945

Email: info@gfc.org.za
Website: www.gfc.org.za

PO Box 22910 Gayridge,
Margate, 4275, South Africa

Lot 32, Alexander Road,
Gayridge, Margate, South Africa



Lightning Printers Screens and Signs | 039 315 5000
OSA Creative Marketing | 039 312 2367