

# TIME

*Well Spent*

Children in Secure Families  
-it's where they belong!



ANNUAL  
REPORT  
2015

Give a Child a

family

...it's where they belong!!



# Table of Contents

<b>Board of Trustees</b> .....	2
<b>Chairperson's Report</b> .....	3
<b>Directors</b> .....	3
<b>Executive Directors Report</b> .....	4
<b>Implementing Family Care in Africa Conference</b> .....	5
<b>Divisional Reports</b>	
South African Development Division .....	6
Family Strengthening Programmes .....	7
Faith Based Liaison .....	7
Child Protection Services .....	8
Foster Care .....	10
African Development .....	11
Temporary Safe Care .....	13
Support Services .....	19
Summary Finance Report .....	21
International Volunteers .....	23
Funding and Marketing .....	24
<b>Networking</b> .....	26
<b>Prevention and Early Intervention Programmmes</b> .....	27
<b>GCF Vision and Mission</b> .....	27
<b>GCF Model</b> .....	27
<b>Contacts</b> .....	Back Page

Tick ... Tock ... Tick ... Tock ... Tick ... Tock ... Tick ... Tock ... Tick ... Tock ... Tick ... Tock ... Tick ... Tock ... Tick ... Tock ... Tick ...

## Board of Trustees



Left to Right: Larensia Rabe (Chair) Top Row: Roger Jasson Dr. George Misi Prof. Sibongile Magagula Bottom Row: Musa Ngongo Dudu Khowa Basil Woodhouse

# Chairperson's Report

Larensia Rabe



Larensia Rabe (Chair)

2015 has once again been a busy but very productive year for the Trust, Management and Staff of Give a Child a Family. We welcomed a new Trustee to our Board- Professor Sibongile Magagula- who's Social Working skills and knowledge brought an even deeper understanding, commitment and strength to our Board of Trustees.

During 2015, the Board attended the Four Quarterly Trust meetings as well as a further two Special Strategic Meetings to discuss and advise our Executive and Senior Management Team on operational and strategic implementation and planning for the organization's short and long term vision.

Furthermore, I must convey my appreciation on the great work the GCF team put in place on delivering an excellent conference on Implementing Family Care in Africa which was held in June at Emperor's Palace in Johannesburg. This conference attracted high praise and good feedback from the many local and international delegates who attended from around the globe.

The ongoing effort and dedication of the work into Africa continued to gain momentum and even through many challenges were faced, the end results were rewarding, and words cannot fully express the merits of the staff across all Departments working both locally and into Africa. Your commitment to children and improving lives of families at risk remains astounding and remarkable.

It has been such a privilege to have been part of Give a Child a Family for the last 10 years and it was with great sadness that I resigned from the Board of Trustees at the end of 2015. As I leave on my next chapter in my life, I want to wish the Organization and all the staff God's Blessings for the future. I will continue to follow your progress with pride and may you go from strength to strength, as you always hold the Child's Best Interest at the centre of your work.



Tick ... Tock ... Tick ... Tock ... Tick ... Tock ... Tick ... Tock ... Tick ... Tick ... Tock ... Tick ... Tock ... Tick ... Tock ... Tick ... Tock ... Tick ...



From Left to Right: Elize Coetzee - Resource Development Charmaine Wagenaar - Support Services Lydia Gordon - Child Protection Services  
Teresa Nxumalo - Acting - Children's Services Nomvuyi Sukuantaka - Acting - Development Training





Mareli Schwartz  
PA Executive Director



Monica Woodhouse

Child Protection is a vision that has followed us throughout the years, and at last we saw the fruits of our labour this year when we received the good news that we have been granted Child Protection Organisational Status in April of 2015... this really allows us to dream bigger and better, to care bigger and better, to serve bigger and better...

It is a desire for us at GCF that although we work far and wide in many countries serving organisations, churches, families, children, we are still passionate about our own community here in UGU and want to serve this community and make a difference here. We want to saturate the UGU community with Child Protection Methods and Systems, so that Child Abuse will decrease and we will see less and less children suffering at the hands of adults who wield their power over them, with no regard of the damage that lays claim to the children, they deal with.

We continue our passion to develop and capacitate families to better care for their children, through parenting skills, also helping the families to identify the pain of loss, and how to deal with the emotions of loss - as this assists the families to better identify and care for the emotions of the child they care for. Healthy Living for their spirit, soul and body, is a workshop developed to see families able to handle basic financial budgets, spiritual care, as well as physical health.

Our work in Africa is growing, it's exciting and daunting, as we are having to plan strategically for the next phase of our development. We realize this is no child's play.

We are so grateful that although we had to sit tight and tighten our belts, financially, for the last couple of years to see us through the challenging economic times, we made it through another year, however we were saddened by the terrible challenges that our partners and other NGO's had to face in closing their doors, to very good and vital work in the communities.

A very big thank you to the Trustees who give of their time so willingly and passionately, we are so grateful for all of you.

The Executive who have had to grow and take more responsibility, growing in your management skills, you are all very valuable and I am so grateful for the awesome team that we have. Where there is unity God commands a blessing - UNITY is the word - not UNIFORMITY - we are all so different and yet we are all people with a passion, for God, Child Protection and Family.

To the Senior Managers that have also grown in their roles, thank you for being the strong currents under the Exec, who make things happen...

The staff - we have laughed and cried together this past year, and we will continue to do so, love never fails, love conquers all, thank you for loving on the children in the way that you do, thank you for displaying your passion in the gardens, buildings, report writing, administration work, answering the telephones, driving, nursing and much, much more.

Our donors and partners, friends and family what would we do without you, please feel that you have played a significant role in giving... because you sure have made a difference in the lives of many children and families.

**"We cannot do great things on this earth, only small things with great love"** -  
*Mother Teresa*

God bless you one and all from Monica Woodhouse



# Implementing Family Care In Africa Conference

Conference Chair: Monica Woodhouse  
10-12 June 2015



Delegates in attendance	230
Speakers at conference	9
Countries in attendance	34
Panel Members	17



On 10-12 June 2015, The Implementing Family Care in Africa Conference was held in Johannesburg at Emperor's Place. In attendance were 34 countries from around Africa and across the World, including government officials, child protection organizations, Non-Government Organizations and Community Based Organizations.

The methodology of the conference was one of interaction and dialogue between speakers and delegates, as well as among the delegates themselves. This was a conference with a difference, as it was the voices of the delegates that were heard, noted and became points of discussion throughout the conference.

These points of discussion continued in the many months after the conference, where the delegates were able to continue to discuss, explore and share information online about the points that had been raised during the conference as well as new questions which were posted each month for the delegates to debate, ponder and delve into.

We would like to extend a big thank-you to everyone who attended this conference and for the wonderful support from our Conference



Donors - Läkarmissionen and Wereldkinderen- and our Conference Committee - Give a Child a Family, SA Cares for Life, BrainBoosters and TAWO (Together Africa Without Orphans). It was your generosity of time, commitment and knowledge that made this International Conference a success and we continue to look forward to implementing and continuing the work to ensure families and children in Africa receive the best Family Care possibilities.

Our group believes this conference should recommend that implementing family care in Africa becomes a policy in supporting quality child care by engaging and building global capacity through partnerships that will sustain social change."

"We commit to build capacity and engage with everything we do in accordance with the African Union Charter on the Rights and Welfare of the Child and all other movements and protocols."

"We commit to working together to build capacity that will create sustainable and complete families with a father figure. We must focus on the needs of the child with the help of governments and of God."

"We can heal the world. Local people are our partners in implementing quality family care in Africa. There is no other option. We must partner with local communities to sustain change."

"The focus of control must move to communities and families. We should advocate for policy change to support local communities in implementing quality care for children in Africa. We must ensure that we actively engage and support local communities as our partners in implementing the appropriate policies."

Tick ... Tock ... Tick ... Tock ... Tick ... Tock ... Tick ... Tock ... Tick ... Tick ... Tock ... Tick ... Tock ... Tick ... Tock ... Tick ... Tick ... Tock ... Tick ...

## DIVISIONAL REPORTS :

### South African Development

Acting Director *Nomvuyi Sukantaka*

The beginning of 2015 kept the department busy with two programmes that were run concurrently. Team members were concluding the Parenting Skills Training to foster families through our partnership with Department of Social Development, conducted in the areas of EThekweni and ILembe Municipalities.

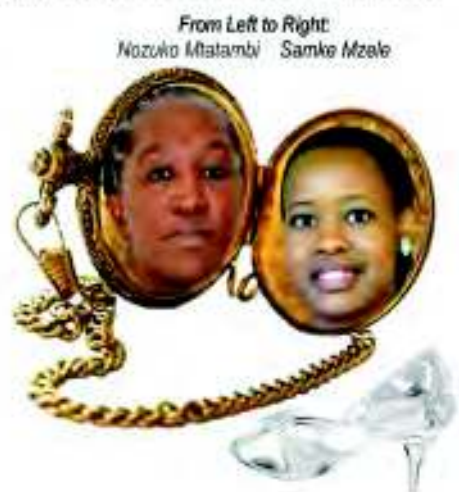
Our partnership with the National Development Agency received mentoring for a further 20 Community Based Organisations in the areas of ILembe and Zululand Municipalities to ensure their compliance with the NPO Registration Criteria.

During the month of August 2015, a study was conducted with 29 Community Care Givers with the view to establishing their experiences in working with the community. This was conducted in the Umzinto Municipality areas of Vulamehlo & Umzumbe and Hibiscus Municipality in Gciliima & Masinenge.

A partnership made with Hope and Homes for Children South Africa resulted in a survey on counting children in institution with various Child and Youth Care Centres (CYCC's) in UGU and EThekweni Municipalities, facilitated by the GCF Team. This survey was to establish the impact on children living in institutions with CYCC's that were open to the concept of Deinstitutionalisation of children.

GCF facilitated Continuous Professional Development (CPD) training with the social service professionals at KwaDukuza Child Welfare.

Our department was privileged to engage a Community Development Work Graduate for our internship programme and her knowledge and expertise was well received by everyone in the department.





A War Room is a KZN initiative for dealing with various community matters like poverty, health, HIV/AIDS, Education, Child Protection and much more. Our role in the War Room is to provide Child Protective Services in the fight against child abuse in families and the community. GCF was commended for the valuable contribution that the organisation makes to the War Rooms of Gcilima area and stronger relationships were established with the tribal leadership of KwaMavundla, KwaNdwalane and KwaXolo.

Development and Training Programmes	
Number of participants in the NDA mentoring programme	145
Number of organisations mentored	20
Number of Community Care Givers	29
Number of organisations participated in the survey with Hope and Homes	15

Faith Based Care and Community	
Number of War Room Meetings	10
Number of Fraternity Meetings	5
Number of FBO Meetings	9

Foster and Family Based Care Programmes	
Number of parents trained	323
Number Social Workers trained in CPD points	17
Number of beneficiaries for foster and family care training	670



## Child Protection Services

Director- Lydia Gordon

Child Protection Services strived to give effect to the realisation of the United Nations Convention on the Rights of Children, the South African Constitution and the African Charter on the Rights & Welfare of the Child.

In the reporting year we networked extensively to broaden our scope and raise awareness on the safety of children and their families. Ongoing professional development (CPD) remained important during the reporting period and staff attended the following training workshops:

### JANUARY-JUNE 2016

- One Day Adoption Training - by Thams Pather
- Parenting Skills for Reunification Parents - Veronica Jubber
- Cluster Foster Care Information Meeting - Liv Village
- Non-Financial Data (NFD) Department of Social Development (DSD) Elements Training Meeting - DSD Provincial Office
- Child Protection Week: 625 children were reached
- Implementing Family Based Care Conference attended by two Department Members

### JULY-DECEMBER 2016

- Child Protection Services (CPS) Staff Wellness Day at Beaver Creek Coffee Farm and Wild Coast Casino
- Staff Completed Basic Occupational Health & Safety (OHS) Training
- GCF Strategic Planning Consultative Meeting
- Rotary Family Health Day attended at Margate Clinic
- Protective Behaviours Level 1 Training
- Effective Assessment of Prospective Foster Parent Training
- Fast Track Management Course for Team Leaders completed by two staff members
- Lydia G was accredited as a Senior Trainer for Protective Behaviours Western Australia.

Staff successfully embarked with other GCF departments in knitting warm gloves, scarfs and beanies for foster families and these were all handed out at the Annual Foster Care Forum in July 2015

**Our dedicated and committed staff members within the department were:**

**Clockwise:**

Director Child Protection Services  
Lydia Gordon

Administrative Assistant  
Sinesipho Gubela

Social Auxiliary Worker:  
Support Group Coordinator  
Monica Nomlala

Child Care Counsellor  
(Therapy & Counselling)  
Thandokazi Ntshebe

Community Based Social Worker  
Anna- Karin Ohrnstedt

CYCC Social Worker  
Naninzi Sobhuza



**Student Placements**

We had five students who completed their block placement in the reporting period, and they were:

Student Name	Social Work or Social Auxiliary Work
Thembeke Mchunu	Social Work - UNISA
Zamile Zoko	Social Work - Walter Sisulu University
Sinesipho Gubela	Social Auxiliary Work - Zigna Training Institute, Pietermaritzburg
Karl Ericson	Social Work - Miduniversiteit, Sweden
Zanele Ngcobo	Social Work - UNISA

**Trainings Attended**

Training Courses
DSD Prevention and Early Intervention Framework Training
Provincial Foster Care Framework Training
National Framework on Adoption

**Trainings Conducted**

Type of training and target group	Total Number of Beneficiaries	
Prospective Foster Parents	KZN	8
Protective Behaviours Level 1	Mozambique	85
	Margate	15
	Margate	20
Assessment of Prospective foster parents	Margate	15

Since receiving our Child Protection Organization (CPO) status, we have received ongoing monthly basis child protection enquiries including 33 Child Protection Matters.

GCF brought much food relief with the distribution of instant porridges to 6 crèches, 2 schools and a shelter for homeless people.



## Foster Care

*From Top to Bottom:*  
Arina- Karin Ohmstedt  
& Monica Nomlala



Foster Care in South Africa has been challenging and there is much discussion around the process, grants, suitability, birth certificates and other day to day challenges. During 2015 only one child from the GCF Temporary Place of Safety was placed in foster care with screened, trained and approved foster parents from the data base for prospective foster parents. Due to challenges we were unable to affect the movement of children being placed into foster families which has been very frustrating due to the very long waiting periods for children's unabridged birth certificates and the prospective foster parents Form 30s from the Child Protection Register as both documents are required for Foster Care finalization by the Courts. Happily by the end of the reporting year, 3 children from GCF as well as 3 external children were in the process of being introduced to foster families for placement in the upcoming year and a further 3 external children spent several school holidays with a family on the database during 2015.

18 people applied to become foster parents in 2016 and assessment interviews and home visits were done during the year. 7 applicants were successfully approved and 11 due to different reason not approved. Foster Care trainings for prospective foster parents were held in June and November 2015 and 14 prospective foster parents completed the training.

The annual Foster Care Forum took place at Gates of Praise Church Margate, on the 3 July 2016. 60 adults and 203 children attended the day. The topic was "Families that Pray and Play Together, Stay Together". African culture of togetherness was the focus and storytelling, family games as well as prayer and worship united the foster families. GCF staff and external volunteers made the successful day possible. As a gift, all families received knitted scarves, beanies and finger less gloves, which was made by GCF staff and international supporters earlier in the year.



*Foster Care Family Day*

Throughout the year 6 support groups had been running in 5 different areas, which were Murchison, Izingolweni, Celebane, Gamalake and Kwanzimakwe where Monica Nomlala continued to be the Group Facilitator. By the end of the year 54 foster parents had been enrolled in the different support groups and many different topics have been facilitated and dealt with, including: How to deal with challenges of being a foster parent, Communication with children, Child protection, The parent's role in decreasing teenage pregnancy and Appropriate & inappropriate sexual behaviour among children.



*Foster Family Support Group Visit by Dept of Soc Dev Eastern Cape in Murchison*

In 2015 there had been several successes and it was an extra special victory for one of the children who had been at the centre for quite a few years when he could finally start the foster care introduction with a prospective foster family. The match was successful and we are now awaiting the foster care finalisation for him. Another thing that has stood out during 2015 was the half day of Protective Behaviour activities with foster children which had been requested by the foster mothers for their children and it was a good day with good company, fun and learning. During the Child Protective Week the last week of May 2015 several schools in the area was visited and the school children were taught about Child Protection.

## A True Story

### "We Are Ready"

*First a boy arrived to the centre. His mother was violent and unpredictable. None of the relatives wanted to care for the little one. What would the boy's mother be able to do to him if they did? Later a little girl arrived at the centre. The boy had a sister!*



*The absentminded boy and the calm girl were eventually welcomed by a foster family, who fast took them to their heart. A few years passed and the siblings loved their new family and they felt safe and secure just as children should.*

*One day another little girl arrived at the centre, she was only a few weeks old. The boy and the girl had a new baby sister. The children's biological mother had still not a thought of changing her life style and she did not appear to even think about the children she had brought to life. No adult relatives visited the new little beauty in the nursery, but her siblings and their foster mother did. The biological mother passed away and contact was made between the foster family and the woman who had once upon a time taken care of the boy. The foster mother, the foster father and the two children visited her one sunny Sunday morning before church so the ageing woman could meet the children she so often thought about. Only a short time after one of the visits one of the children became ill and the foster mother phoned the woman, who came to sit next to the child's sickbed. Lost family relations started to build up again between her and the children.*

*It was around this time, when the relative mentioned that her dream was that the youngest child still in care would join the elder siblings in the warm family they have the opportunity to grow up with.*

*It did not take long until we received a happy phone call from the foster mother, who delighted us with the following words "We are ready. We think it's time for little sister to move home to us now."*



The bad news is time flies... the good news is ... "You're the Pilot"

## African Development

Steven Werton



2015 was a busy year for the development team with solid progress in many areas, but it was also a year in which some challenges were faced. We were privileged to be part of the Hosting Team for the Implementing Family Care in Africa Conference held in June at Emperors Palace, where we made very good contacts in new areas of Child Protection and Family Development.

During 2015 our team visited 5 African countries, as listed below, and performed various capacity building and training activities.

### Rwanda:

Board Capacity building activities continued throughout the year and we also started the process of outlining further Parenting Skills training to be implemented in 2016.

During the second week of October, a GCF Team member attended a Hope and Homes for Children (HHC) Eastern Southern Africa first regional partners meeting which took place in Kigali, Rwanda. Ten national organisations from seven countries joined the meeting which was held to form a Regional Action Group for the Promotion and Advocacy for deinstitutionalisation. Joint advocacy, capacity building and forming an alliance were some of the key suggestions from the meeting moving forward.

### Mozambique:

Work continued with Association Matsatse in Chimoio on capacity building and programme registration with the government. The GCF team also developed (as part of our agreement with UNICEF) a standard operating procedure manual for Residential Care Centres in Mozambique. This had a massive impact on the lives of more than 800 Children, Staff and Childcare Workers currently in the care system, as well as the lives of children that may enter the system in the future!

### Burundi:

Training was conducted in Burundi in September after a long delay in Programme approval. GCF Team members were able to conduct training of trainers and this did help the general roll out of Parenting Skills training in the Savings groups currently being run by the Anglican Mothers Union. The political situation in Burundi did however worsen throughout 2015 and this made the programme difficult to implement, but planning did continue in the event that the situation improved.

### Uganda:

GCF staff attended a workshop in Kampala, Uganda to develop a RER (Rapid Emergency Response) programme for implementation in local areas. During this time we were able to meet with several other West African countries for possible future work and we were able to meet with the new CEO of RETRAK, Sir Peter Fahy, who was previously the Chief of Police for the Greater Manchester area in the United Kingdom. It was very interesting to hear a Policeman's view on Child Protection!

### Kenya:

Grace Mwangi, GCF Country Manager Kenya, obtained a Bursary to further her studies at the Haifa University in Israel and was absent for the latter half of 2015. Work was continued with Phumwani Maternity Hospital and nearly 1000 mothers and children lives were impacted during the year through the GCF interventions and trainings. GCF was introduced to Vision Africa in Kenya, an organisation that supports 2 Orphanages in Kenya and we were asked to assist them with technical support, which will continue into 2016.

Time  
is the most  
valuable thing  
one can spend !



Grace Mwangi



Storm Damage to roof at Matsatse in December



RER Workshop Kampala Uganda

## TEMPORARY SAFE CARE

Terresa Nxumalo

Acting Director: Terresa Nxumalo

8 new Child and Youth Care workers were appointed during the year in our department, of which 4 out of the 8 appointments came with Child and Youth Care qualification. This brought much needed skills and knowledge to enhance the work of caring for children who are in need of protection and care, whilst the current team continued to fulfil the objective of ensuring the needs of the children were met. We did however receive 4 resignations and we had 1 transfer to another department within the organisation. Child and Youth Care workers play an important role as they are in the life space of children as they await placement into a family or back into their own family. We thank God for sustaining the team throughout the year and it is through Him that we are able to do what we are

Teambuilding - Child and Youth Care workers were treated to a day filled with fun, laughter and sharing of tears as the group joined in singing, praising, praying and sharing together the Word of God in November 2015. The programme started at Gates of Praise church and ended with a lunch at Blue Lagoon restaurant in Ramsgate. It was a good time for Child and Youth Care workers and we continue to pray for and support one another as we continue fulfilling day by day duties.



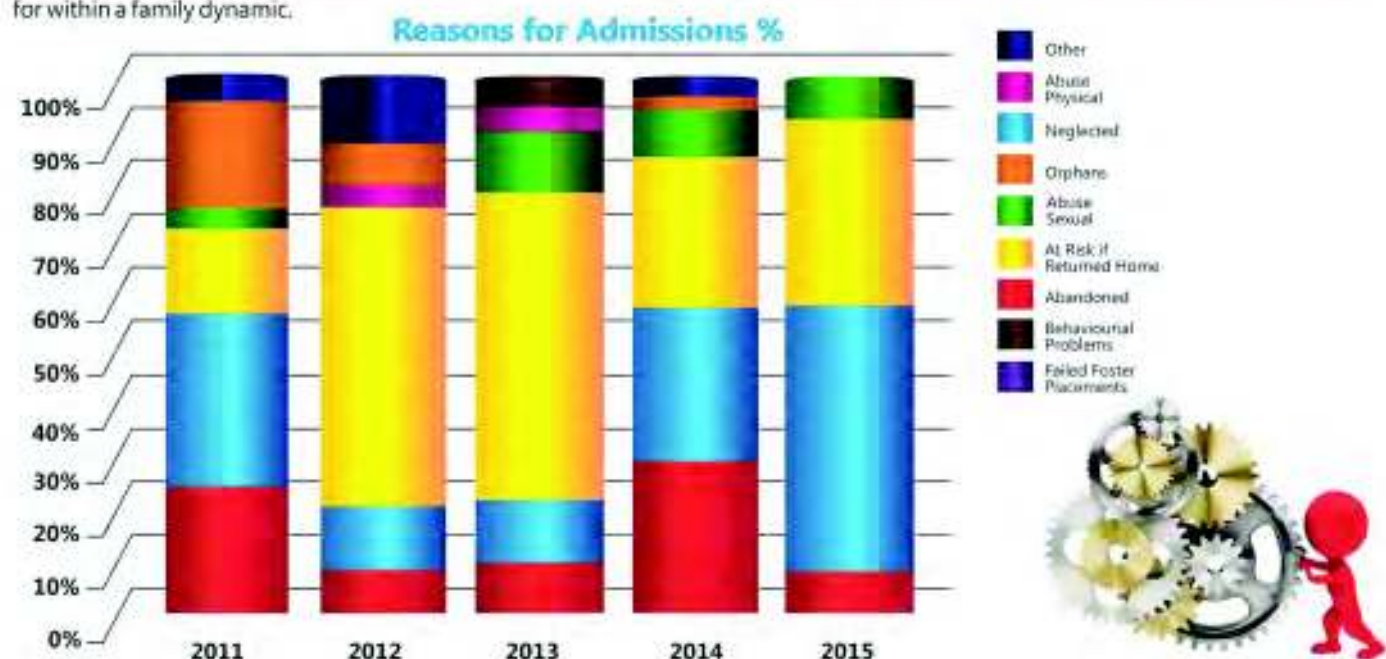
Children in Care 2015	
Number of Children Admitted	45
Number of Children Discharged	44
Total Number of Children reunified with their own families	37
Total Number of Children provided with short term residential care at GCF in 2015	93

### CHILDCARE

At Give a Child a Family we strive to provide child friendly services for all children that are removed from their families and communities. Wellbeing of children whilst in our care is the priority for our programmes. We ensured their immediate needs upon admission and provided continuous interventions throughout their stay in our residential care. Through our health, therapy and education assessments, immediate referrals and recommendations are made.

In 2015 we saw an increase of 44% in cases of children removed due to neglect compared to 2014 and an increase of 31% of children who would be at risk if returned home. This highlights the level of children who are exposed to all forms of danger and harm as they become more vulnerable. There is a great need to create more awareness on Child Protection and creating stability within families to guarantee safety and protection of children.

The reporting year saw an increase in the admission of siblings, minimum 3 and maximum 5 children per family. Poverty still played a role in dislocation of families and putting children at even bigger risk. Our programmes focused on providing short term temporary residential care for children awaiting placement with a secure family. Our mission remains family based care as children are best cared for within a family dynamic.



## December 2015

Sunday	Monday	Tuesday	Wednesday	Thursday	Friday	Saturday	
							
							
							
							
							

From L to R: Bonisiwe Mkhize (Prod) Noma Mawoko (Prod) Nomonde Mqikana (Unit Leader-Nursery) Thembi Nowadi (Unit Leader-Nursery) Rebecca Nzimakwe (Unit Leader - Girls & Boys Section) Sindisiwe Ngidi (Unit Leader-Girls & Boys Section) Sylvia Hlalukana (Unit Leader-Night Duty) Veliswa Sonkosi (Unit Leader - Night Duty) Rejoice Gundane Nonkubela Nkqayi Kethiwe Tejana Thembeke Masina Sthembele Mzelemu Lungile Ngeleka Nomah Nxumalo Nompilo Madlala Nontobeko Ngwazi Welekazi Zuka Eunice Meintjes Thobeka Ntozakhe Prudence Gcaba Nomhle Hoste Zakhiti Mkhungo Thabile Sogoni Zenele Xolo Nokwanda Jaja Dorice Mthuli Nomaledi Moya Zanele Nzuke Liziwe Madikizela Nokuzola Silangwe Thandiwe Sikobi



Our department was saddened by the passing of Mhlengi Cele in December, who was 11 years old after long illness. He was a brave young man who fought the sickness and was still smiling until the day of his passing. He is still missed by his friends at the centre, his Care Givers, the school he attended, the entire GCF staff and volunteers who were very fond of his cheerful smile. May his soul rest in peace.

*Tick ... Tock ... Tick ... Tock ... Tick ... Tock ... Tick ... Tock ... Tick ... Tock ... Tick ... Tock ... Tick ... Tock ... Tick ... Tick ... Tick ...*

### RESIDENTIAL SOCIAL WORK AND THERAPEUTIC PROGRAMME

There is a need for children to stay connected to their families and the outside world in order for them to not lose their sense of belonging whilst in temporary safe care. The Residential Social Worker is the liaison person ensuring that supervised phone calls are made to families or significant relatives. All children admitted have suffered some form of trauma, neglect, abuse (physical and sexual), loss of someone special, abandonment, disappointment, and the loss of trust. Therapy and counselling helps them to deal with their deep rooted pain and emotions that comes with it. Through Play Therapy, One-on-One Therapy as well as Group Work children find themselves again. The main core function for this department was building resilience and restoration for the children. During the reporting year there was an increase on issues of sexual abuse and/or allegations of sexual abuse which indicates children are not safe anymore. Sad to say there is still a lack of underreporting about sexual abuse cases involving children, leaving many children still at risk.

From Left to Right:  
Noninzi Sobhuza  
and Thandokazi Ntshibe  
Bottom Sinesipho Gubela



## EDUCATION

Thembi Mathenjwa



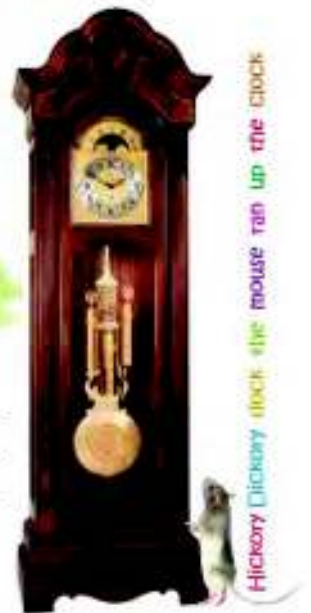
### Early Childhood Development

#### Nursery Pre-School Programme (0 - 3 years)

At GCF we Play with a Purpose! Children learn through play - They learn and develop skills in various developmental areas e.g. Gross and Fine Motor, Cognitive, Speech & Language, Social & Emotional, and various life skills. Input & Sensory processing skills also form an integral part of all developmental areas. Play helps children grow and it promotes a healthy body, emotions and mind in children from a young age. There is more to play than meets the eye. Children learn to play in many different ways e.g. Symbolic play, Creative Play, Communication Play, Rough and Tumble Play, Social Play and Fantasy Play.

We have a programme in the morning that consists of various items such as:

- Music & Dance
- Song & Nursery Rhymes
- Beading & Threading, Stacking, Sorting
- Playing Ball, Scooters, Running, Jumping, Climbing
- BrainBoosters Themes e.g. Colours, Shapes, Numbers, My Body, Fruit & Veg, Animals
- Arts and Crafts
- Life Skills e.g. Good manners, Hygiene, Taking turns, Sharing, Eating with a spoon



Hickory Dickory Dock the mouse ran up the clock

Initially we started off with only BrainBoosters, but the Programme has evolved into a fully-fledged pre-school development programme that will go from strength to strength in the years ahead. Play and learning go hand in hand. They are not separate activities. Play is the child's science laboratory. Together we Play, Learn and Grow.

#### Pre-School Programme (3-6yrs)

In 2015 we enrolled 14 learners in the month of January and we saw the number of children increasing up to 23 by the month of September. In December 25 children were enrolled with 11 graduating from the class and we closed the school with 14 learners for 2016. We accommodated learners between 3-4 years for BrainBooster programme and we accommodated a further 2 learners for grade R and 2 learners for the Remedial programme. We also implemented a movement programme for the learners who had achieved their goals in BrainBooster programme. We implemented an afternoon Catch Up Programme for grade one learner four days a week in the afternoons focusing on Maths and Literacy. In June & July there were 7 children receiving remedial assistance.

The curriculum was planned following the scheme of work and the following tasks were achieved. Teaching and learning of all themes were completed in November.

- Writing of monthly reports
- Writing of weekly case conference reports
- Learners progress and recommendation reports
- Assessment for certain learners
- Monthly evaluation for volunteers who assisted at ECD

ACTIVITIES ACHIEVED FOLLOWING OUR YEAR PLAN

- Outings /excursions
- Art and craft
- Paintings
- Class projects themes
- Children's sport day
- Extra mural activities



SCHOOL

We had been assisted by the international and local volunteers in the running of ECD programme and they all played an important role in the school programme. The school also assisted the outside community children who had been attending BrainBooster programme in the year that were not schooling for various reasons.

**Primary School Education**

We were fortunate that our children could go to community schools in our area - Sithembikosi Primary school in Gamalake, Suid Natal Primary, Margate Primary and Lorraine Home-School in Margate Ext 3.

After being admitted at GCF, we assessed the children and when they were physically (health wise) and emotionally ready, we enrolled them into the various schools. Many of the children had never been to school before although they were of school going age. Some children had missed many months of school due to difficult home circumstances.

Thank you to the principals, teachers and all school staff for going the extra mile to settle the children in school, for working with and supporting the children into a better tomorrow.

Together with our Child Care Workers and our Education Coordinator, Thembi Mathenjwa the children are helped with their homework, projects and remedial teaching in the afternoons.



"For everyone that succeeds, it's because there is somebody there to show you the way. The light does not always have to come from your family. For me it was teachers and school!"  
- Oprah Winfrey

Early Childhood Development	Beneficiaries
Children 0-2	12
Children 2-3	17
Primary School	Beneficiaries
Children Grade R-Grade 3	23
Children Grade 4-Grade 7	6





## HEALTHCARE

Glenda Emmerson

From the initial health assessment and the individual health care plan & various interventions, to the transfer letter for when children leave the centre, we made sure a child had optimal health so they would be able to concentrate fully on what life had to offer and the obstacles they had to overcome.

We are fortunate to have good working relationships with our local clinics, Gamalakhe, Port Shepstone, Murchison and Margate NetCare Hospital. Dr J. Paraze (GP), Dr Prinsloo (GP) and Dr R. Ramouthar (paediatrician) who are also absolutely invaluable in helping us to give the children the best health care possible with the limited resources we have.

Saying thank you to donors is such a small thing when you do such BIG things for the children. There were times when certain medication e.g. Prophylactic treatment were not available for all children who needed it and we were in the fortunate position that we could buy this treatment privately. It would not have been possible if it was not for YOU - The Donor. Being able to provide for the children's needs is a blessing indeed.

### Health Care Training

Healthcare training makes up an integral part of what we do at GCF and by providing relevant training to our CCW's we empower them and our community to ensure the children in our care are well taken care of in all areas of need, from routine interventions e.g. Immunization and Deworming; Childhood illnesses; minor ailments e.g. Flu and Impetigo; more serious illnesses e.g. Pneumonia or TB; or the management of chronic ailments e.g. HIV, Epilepsy or Diabetes and Special Needs children.

Child Care Worker's (CCW) were taught to make knowledgeable observations and what correct procedures to follow in various situations e.g. Reporting and Recording, administering medication, how to measure body temperature & lowering a fever, how to prevent dehydration, hygiene and Universal Precautions, what to do in case of an emergency and basic first aid.



### SPECIAL NEEDS PROGRAMME

Every little bit counts - That is what we have learned over the years working with Special Needs Children - whether disabled or developmentally delayed. Between our Developmental Therapist Kim Nell, the International Volunteers, dedicated Child Care Workers and Hospital Occupational and Speech Therapists, the constant input given to the children adds up over time.



The smallest improvement or ability to do something new brings a whole heap of joy to the child and those working with them. *'The only disability, is a bad attitude'*, and I can truly say that everyone in the children's lives care for them with great joy, kindness and love. In the end, the love we receive from the children and their positive attitudes, humbles our hearts and fires on our passion to never stop trying.



No. of Children with HIV (all on ARV's)	10
No of Children with TB (all on TB Meds)	5
External Healthcare Interventions	461
HIV Testing	49
Internal Health Interventions	883
Hospitalizations	12
Immunization (incl. external interventions)	56
Assessments	37
Dental (incl. external interventions)	70

No. of Children with Disabilities	5
No. of Developmentally Challenged Children	6
Number of Interventions	528

## SPIRITUAL CARE

Much focus is on the physical & mental wellbeing of children, but we know the spiritual care is also as important. We believe in praying for children & inviting the Holy Spirit to take part in the restoration process. When children are admitted, we prayed for them to break away from all forms of rejection, feelings of not being wanted, loved or feeling unimportant. For us all children are special & are made in the image of God. When they celebrated their birthdays, we sang and thanked God for their lives and when it came time for them to leave we prayed for their safe keeping & release them with love. Over the past year we would like to thank the following people for contributing to the spiritual care of children in residence during 2015:

- Gates of Praise church - Children's church and youth programme
- Barbara and Jimmy Shields - From The Good News Bible Club
- Full Gospel Church - Youth group visited as an outreach youth programme



## RECREATION & FUN



Celebration of birthdays for children thanks to Chantelle, Erin and friends, as well as Jo-Ellen and Roxanne from Top Market for the gifts and time you spent with the children. The children had a blast when they were once again invited to the IBV Children's VIP day in Durban in 2015. It was wonderful to join in and see our children dress in their cultural attire as they celebrated Heritage Day at Sacred Heart CYCC in September 2015. Christmas was made special for the children through the generosity of gifts donated by the team at Santa Shoe Box led by Allison & Ryan Keyes, the Davis Family and Jo-Ellen & Roxanne from Top Markets, plus many more treats from local supports.

## HOLIDAY PROGRAMME

The children deserved a break from day to day school life and the Holiday Programme held during each school holiday put together by staff and the international volunteers, which helps the children enjoy and explore their creativity with arts and crafts, sporting activities, swimming, football and volley ball. The children also attended Bible Camp at Margate Baptist church, trips to the beach and outings to Oribi Gorge.



We would like to express our appreciation to the international volunteers who assisted during the holiday programme.



## SUPPORT SERVICES

Director: Charmaine Wagenaar



## Human Resources

Maria Hufner

Staff well-being and development are two important aspects to obtain or retain motivated talent. During the year employees had the opportunity for voluntary blood pressure and blood sugar tests. A dietician from a local clinic gave a presentation about the effect of healthy food, water and exercise on the body. During 2015 GCF continued to assist employees with obtaining their driver's licences.

Two employees did the facilitation course and 4 employees the assessment course. One of the GCF Social Workers was registered as a Facilitator/Assessor for FETC Social Auxiliary Work and FETC Child and Youth Care Work with the Health and Welfare Sector Education and Training Authority (HWSETA).



### Staff Training

Staff Wellness and Development Training	
January	Workshop on adoption for Social Workers
February	Parenting skills
March	Workshop on GCF policies and procedures for all staff
April	Supervisory Management course for directors, managers and coordinators
May	Module 1 Child and Youth Care Work for new appointed caregivers. Health Check for all staff and a workshop on Health (food/water/excise)
June	Module 2 Child and Youth Care Work for CCW Team 1
July	Module 2 Child and Youth Care Work for CCW Team 2
August	Childline workshop on Impact of Absent Fathers for Social (Auxiliary) Workers & Community Workers
September	Red Cross First Aid, Module 1 for Child and Youth Care Workers
October	Workshop on Protective Behaviour for Social (Auxiliary) Workers and Community Workers
November	Workshop on Protective Behaviour for GCF staff (18)

#### Staff Head Count

Beginning of year	65
Appointments for vacancies	15
Terminations	10
Head count at year end	70

#### Reasons for Terminations

Resignations	7
Contract expired	2
Retirement	1

#### Staff Development

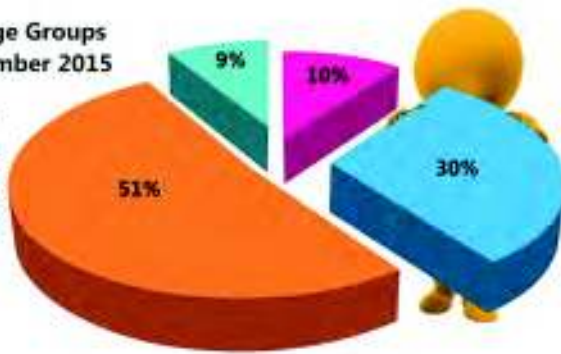
Sessions	12
Staff Meetings	8

#### 20 Years Long Service Awards Veronica Jubber

10 Years Long Service Awards  
Monica Nomlala  
Charmaine Wagenaar  
Nokuzola Silangwe

**GCF Staff in Age Groups as per 31 December 2015**

30 <	7
31-40	21
41-55	36
55 >	6



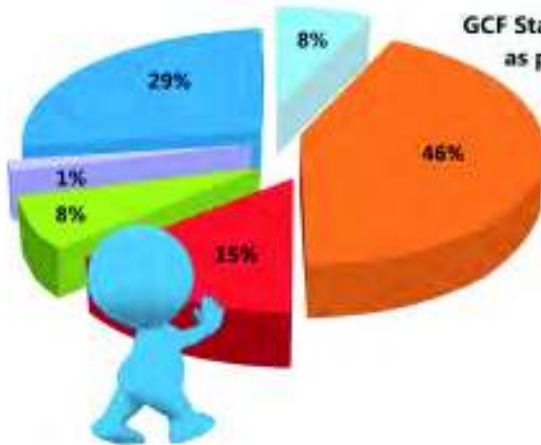
**GCF Staff Male/Female as per 31 December 2015**

Male	8
Female	62



**GCF Staff divided in departments as per 31 December 2015**

Temporary Safe Care	30
Support Services	19
Development	10
Child Protection Services	5
Executive	5
Resource Development	1



**GCF Staff according to race as per 31 December 2015**

African	52
Coloured	4
Indian	2
White	12



**GCF Staff according to first language as per 31 December 2015**

Afrikaans	7
English	8
Xhosa	16
Zulu	37
Other	2



## FINANCE AND ADMIN

The finance team is little - we have to keep things tight...  
 We may seem grumpy sometimes, but never care to fight  
 There's little room for error, the deadlines just fell due...  
 Our world is real specific - plus/minus just won't do!  
 At audit time we gnash our teeth and check and plan and file  
 We know we can trust each other to go that extra mile  
 So if you see us beavering, please spare a thought or two  
 For the bean-counters of GCF are happy to support ..... just you!



From Top to Bottom:  
 Avlon Ferreira  
 and Sarah Govender



## Summary Finance Report



### THE PLACE OF RESTORATION TRUST

#### STATEMENT OF FINANCIAL POSITION AS AT 31 December 2015

ASSETS	Notes	2015 R	2014 R
<b>Non-current assets</b>			
Property, plant and equipment	4	7 776 473	8 100 359
<b>Current assets</b>		3 227 831	3 587 203
Trade receivables	5	759 788	984 297
Cash and cash equivalents	6	2 468 043	2 582 906
<b>TOTAL ASSETS</b>		<b>11 004 304</b>	<b>11 667 562</b>
<b>TRUST CAPITAL AND LIABILITIES</b>			
<b>Funds</b>		8 168 466	8 986 633
Trust capital	7	100	100
Accumulated funds			
- Funds representing fixed assets values		7 776 473	8 100 359
- Unrestricted funds		391 893	886 174
<b>Non-current liabilities</b>			
Restricted funds	8	2 597 432	2 364 708
<b>Current liabilities</b>			
Payables	9	238 406	316 221
<b>TOTAL CAPITAL and LIABILITIES</b>		<b>11 004 304</b>	<b>11 667 562</b>

### THE PLACE OF RESTORATION TRUST

#### STATEMENT OF COMPREHENSIVE INCOME FOR THE YEAR ENDED 31 December 2015

	2015 R	2014 R
Revenue	6 700 967	5 655 250
Other income	4 949 727	5 391 021
<b>Total income</b>	<b>11 650 694</b>	<b>11 046 271</b>
Operating expenses	12 523 002	11 723 995
Administration expenses	87 231	65 250
Finance expenses	-	7
Deficit before capital recoupment	( 959 539)	( 742 981)
Capital recoupment	141 372	314 273
Net deficit for the year	( 818 167)	( 428 708)



## Maintenance and Logistics

Divisional Manager: Jan Oosthuizen

The maintenance team was responsible for maintaining four properties: Child and Youth Care Centre, Siyavuna Development Centre, Family Based Care and Praslin Flat no 6. The team performed a high standard of maintenance on buildings, projects, garden services. The team worked to the strict accordance of the National Building Regulations.



### Logistics:

The maintenance team ensured that the fleet of vehicles were cleaned, serviced and well maintained. One new vehicle (Toyota Etios) was donated during the year thanks to the generosity of Johannabode to help with transport to school.

### Occupational Health and Safety:

Occupational Health and Safety (OHS) formed an integrated plan for the health and wellbeing of our children and staff. All our staff went through Basic Occupational Health and Safety training in the year, and the Safety Representatives received training in Hazard basic OHS in the workplace, Risk assessments, Evacuation drills, and other emergency procedures. Development of risk control measures were usually carried out at the same time as the risk assessment, whilst the OHS representatives were together. They worked together to think about ways to deal with the hazards that have been found and listed. The OHS committee group also considered the impact of risk control measures on GCF service, independence and lifestyle. Eliminating risks was the most effective way to make the workplace safer and employers were required by law to attempt to eliminate any reasonably foreseeable risk in the first instance.

### Housekeeping:

The housekeeping team was responsible for sorting of donations, the cleaning of all the buildings, and the smooth running of the laundry.

### Kitchen:

The kitchen team was responsible for preparing nutritious cultural food for the children, volunteers, and staff as well as catering for training and functions.



Clockwise: Jan Oosthuizen Loyiso Ntini Chris Louw Jeffrey Madulini and Le Nhlumayo

The following projects were done in the past year

- Upgraded and painted the cold room in the kitchen.
- Re-painted and upgraded the Girls section.
- Planted grass in playground and installed irrigation system.
- Sanded down all wooden windows and doors.
- Installed new ventilation louvres in the Nursery.
- Controlled borer infestation in the Volunteer House.



Maintenance, Housekeeping and Logistics	
Laundry Washed & Ironed (Tons)	12
Maintenance requests	690
Major Maintenance Projects	9
Meals Prepared	125 386
Scheduled tasks	927
Fuel used (litres) Driving	15 379
Vehicle Inspections	286
Total Kilometres Driven	204 248

## Housekeeping & Kitchen

From Left to Right: Phuntzile Hadebe Vuyokazi Mfihl  
Zanele Zulu Daphney Gumede Sibongiseni Ngobese  
Veronica Qadi Nonjabulo Nyawa  
Nonwamo Sathembe  
Nozipho Mlamikono



## International Volunteers

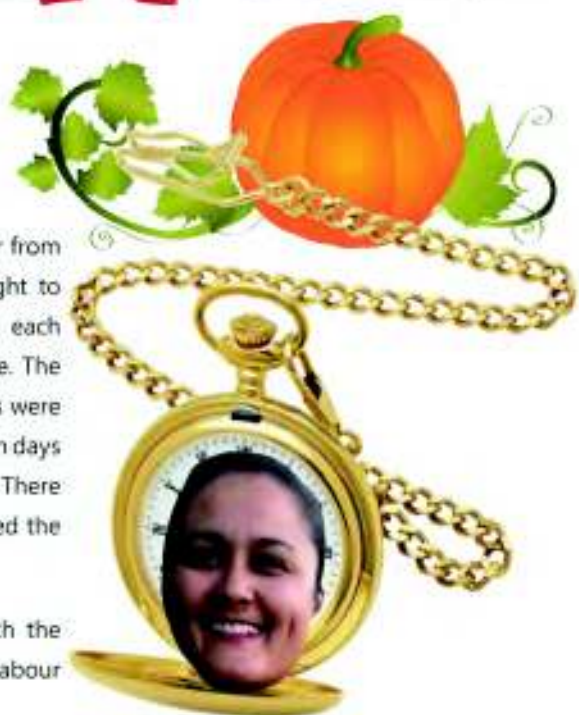
Lynette Rinkwest

In 2015 we had 15 new volunteers who arrived from Sweden and 1 volunteer from Holland. We had 3 volunteers carried over from 2014. It was such a delight to welcome new faces to our organisation. Whether they were old or young, each person brought a uniqueness that God was able to use to make a difference. The beauty of having volunteers was the fact that it was inevitable that their lives were impacted in a unique way. There were many joyous days but also mixed emotion days and sad days. It was easy to feel happy and sad when children had to leave. There was a very sad period when one of the children passed away and this affected the volunteers at the time very deeply.

Volunteer contributions were so invaluable. They ranged from playing with the children, sharing love and joy, praying with them, driving, teaching, to manual labour and so much more.

In our volunteer meetings various activities were done and one of these activities was creating a bucket list. For those who stayed for a longer period of time could tick off quite a few activities from their bucket lists. As the coordinator, it was my joy to create moments to show our appreciation, and I was able to surprise a group with something that was on their bucket list - riding on the back of a van and treating them to a much desired salmon meal.

After the volunteers leave they share their experience and time at GCF with their friends and family. Most of the volunteers who apply, have been in contact with previous volunteers who have recommended GCF. This is a great testimony to the work we do at GCF.



# Funding and Marketing

Elize Coetzee and Sam Podmore

On behalf of the Resource Development Team Elize Coetzee-Director and Sam Podmore -Manager it is with genuine gratitude in which we would like to express our most sincere thanks and appreciation for our donors and supporters during 2015. Each year your aid and generosity impacts the lives of our children, families and staff here at GCF, and we salute your trust, devotion and faith in our programmes, vision and mission.



From Left to Right:  
Elize Coetzee and Sam Podmore

At the end of 2015, we had to say a sad farewell to Elize Coetzee when she retired after 12 years of dedicated service to the organization. Her contributions over the many years helped GCF grow in many positive ways and many children's lives were touched by her kindness and benevolence



FRIENDS OF POR SCOTLAND



## Scotland

To the Reverends Monica & George MacDonald and all our POR Friends across the pond, may we say a very big thank-you for your continued support and heartfelt kindness towards our Special Needs Children and their Therapeutic & Counselling Programmes.

## South Africa



social development

Department  
Social Development  
REPUBLIC OF SOUTH AFRICA

Thank-you to the Department of Social Development for your subsidy towards the continued care of our children and social workers salaries.



ANGLO  
AMERICAN

DE BEERS  
A DIAMOND IS FOREVER



We would like to extend our thanks to DeBeers & Anglo America coordinated through Tshikululu Social Investments for your contribution toward the capacity building and therapeutic programmes at Ikhaya lethu administered and implemented by GCF throughout 2015.



FRESENIUS  
KABI

Many thanks to Fresenius Kabi for having our children's healthcare needs as your CSI focus. Your contribution ensure our children's healthcare remains a priority in building back and maintaining a healthy resilience.



Murray  
& Roberts



mrp foundation

Thanks to our corporate sponsors and local individuals of goods-in-kind donations. Without you our children would not enjoy the magic of Christmas and birthdays (Santa Shoe Box, East Coast Radio, Toy Story, Top Market, Lions & private citizens), the joy of sleeping in new bed linen and a room freshly decorated to help a child dream big (Mr P Foundation) and your contribution towards our grocery cupboard to help make yummy wholesome meals so our babies and children can grow up strong and healthy, as well as helping our poverty stricken families in need. (Murray & Roberts, East Coast Radio, Food



Parcels, South African Sugar Associations and Illovo Sugar).

## Sweden

# Läkarmissionen

Blessings and gratitude to our principal donor, Läkarmissionen for your ongoing commitment towards our organization's vision and mission. Your support and belief in our work, programmes and commitments has been fundamental in helping us achieve and succeed in implementing and strengthening our strategic plan.



EVANGELISKA  
FRIKYRKAN

We would like to thank Interact for your financial contributions and your prayers for our babies, children, families and staff throughout 2015. You have made a difference to many!!



### Churches & Swedish Individuals

One person can make a difference, but when many come together, you create a movement of change. Thank-you for making such a wave of change through your support of our organization, we truly thank each and every one of you. Blessings!!

**Sakeous Stiftelsen**, your generosity is very much appreciated and helps greatly in the success of our programmes and projects. Thank-you for your willingness to always be part of the solution in making a difference.

#### NETHERLANDS

##### Johannabode

Education is such a key foundation in any child's development, and we would like to express our most gracious thanks to Johannabode for ensuring our children's tomorrow.



Thank-you for your support of our **Stichting** and programmes.



To **Wereldkinderen**, who have supported our Family Strengthening Programme with such due diligence, please accept our most heartfelt thanks and appreciation. You have changed lives and made a huge difference to many families.



For our Dutch friends and members of the **Stichting Vrienden Van GCF** your ongoing dedication and persistent perseverance makes you a force to be reckoned with, and we are very proud and grateful for your contributions towards the educational needs of our GCF children.

#### MIVA-NL



Thank-you for your support towards our transportation needs of our children, it help us greatly in ensuring our daily tasks are accomplished in safe and secure custom.



- Läkarmissionen
- Department of Social Development
- Wereldkinderen
- Various - International
- Friends of POR - Scotland
- Evangeliska Frikyrkan
- Sakeous Stiftelsen
- Stichting Vrienden van GCF
- Fresenius Kabi SA
- Anglo American Chairman's Fund
- Various - Local

#### Marketing

Sam Podmore

The first half of 2015 focused on the up and coming Implementing Family Care in Africa Conference (IFCAC) held in Johannesburg in June 2015. With 34 countries and 230 delegates attending from all over the globe, there was a great deal of planning and organization to be done as we counted down the months to implementation. It was all hands on deck from all departments as materials and presentations were written, redesigned, printed, transported and finally displayed and distributed to the delegates. Thank-you to the sponsors, staff, delegates and presenters for all your support, time and effort in making the IFCAC 2015 an overwhelming success.

We have continued to see an upswing in our social media and electronic communication growth across the globe. Together with our bi-monthly newsletters/newsflashes in English Dutch and Swedish, these electronic platforms have become a staple and cost effective means of communication between our followers and supporters.

During the course of 2015, the marketing department was on hand to assist other departments with their marketing and event needs, like the Annual Foster Family Care Day, Santa Shoe Box, Top Market, Port Shepstone Lion's Show, GCF Tours, The AGM, Girls and Boys Room Revamp and the day to day marketing and communication requests.

Newsletter Subscribers	1567
GCF Tours	123
Thank-You Letters	130
Online Donations	R 80,000
Facebook Followers	1392
Twitter Followers	209
Website Visitors	4247

"Give without expectation - and without exception,  
and you will be exceptional."

*Jerod Kintz*



## NETWORKING

Organisation	Purpose
Child Welfare Offices (Margate, Port Shepstone, Umzumbe)	Utilisation of foster care bank Case Management of Children
DSD and NGO's Social Service Professionals	Attendance to the Social Workers Forum
Focus on Ithemba Cluster Foster Care Village	
Liv Village - Tongaat	Strengthening and capacity building - linking and learning regarding alternative care
Mother of Peace - Illovo	
Haven of Rest - Tongaat	
Ingane Yami Trust	Proactive approach to foster care and services of GCF
CAST - Westville, Durban	Proactive approach to foster care and services of GCF
Victim Empowerment ( AntiRape) Stakeholders Forum chaired by Port Shepstone SAPS Cluster	Intersectional partnership strengthen resources in curbing violence against women and children and families
Khulisa in partnership with NPC	Social Transformation of Communities Siyaphambile ECD Centre Masinenge: Capacity Building & strengthen child protection services
Democracy Development Programme	The Book Launch: The Flipside by Justin Foxton. Social & Capacity Building Solutions
Lorraine Development Centre	Child Protection Programmes
Margate Middle School	Child Protection Services
Work4skills Programme	Life Skills Programme for unemployed people. GCF referrals (3) secured excellent results after completing the programme.
Social Workers in Private Practice KZN	Collaboration and linking and learning
Ugu Office on the Rights of the Child	Local municipality growing the rights of children are upheld
KPACC	KwaZulu Natal Provincial Advocacy
KZNCSOC ( KwaZulu Natal Civil Society Coalition)	Monica Woodhouse is Chairperson of 130 Member Organizations & the harnessing of these collective strengths to bring about change in KZN
Siyavuna Development Centre	Food Garden Programmes
Hope and Homes for Children - South Africa	Deinstitutionalization Research, Regional Advocacy
AIDS Foundation	Implementing Family Care Conference 2015
REPSSI	Implementing Family Care Conference 2015
Ikhaya lethu Home of Love & Care ( Home for Disabled Children)	MOU - Capacity Building and Mentorship
SA Cares For Life	Implementing Family Care Conference 2015
Department of Health	Services and Mentorship
UNICEF - Mozambique	PCA - Children's Homes Norms and Standards
Social Action	SOP for Temporary Safe Care
BrainBoosters	Implementing Family Care Conference 2015
Amendit	Benchmarking, Training and Partnership
NACCW - Isibindi	SOP for Temporary Safe Care
<b>Child and Youth Care Centres and Service Offices</b>	
Sacred Heart CYCC (Umzumbe)	Holiday Placements with GCF foster parents promoting family based care to residential children  Referrals and counseling services  Attendance of Social Workers Forum  Training and capacity building
Temba Club CYCC (Kwanzimakwe & Margate)	
Unathi CYCC (Oribi)	
Emseni CYCC (Port Shepstone )	
Rehoboth ( Murchinson)	
Assisi Shelter (Umzumbe)	
Ikhaya lethu Home of Love and Care ( Kwanzimakwe)	
South Coast Hospice (Port Shepstone)	
Ziphakamise Social Development (Port Shepstone)	
Rotary	
Childrens' Right Centre	
<b>Faith Based Organizations</b>	
Norwegian Settlers Church - Pastor Trevor Downing	Rhema Church - Pastor Larry
Pastor Mike Effanga - Marburg	Margate Baptist Church - Chris Anderson
Pastors at Council Chambers Port Shepstone	Full Gospel Church Shelley Beach - Peter Loots
Pastors of Concerned Christians Group	Methodist Church - Pastor Stanley Damoyi



## PREVENTION & EARLY INTERVENTION PROGRAMMES FOR SUSTAINABLE QUALITY SERVICE DELIVERY

- Parenting Skills
- Healthy Living
- Effective Fatherhood
- Home & Community Safety
- Temporary Safe Care
- Family & Foster Care
- Coping With Death & Trauma
- Food Gardens-Poverty Alleviation
- Milestone & ECD Development
- Protective Behaviour

**GCF Vision:** Children in secure families

**GCF Mission:**

- ❖ **Protect** children by placing their best interest at the center of all GCF programs
- ❖ **Provide** communities and organizations with skills and competencies to ensure a nurturing and safe environment for children
- ❖ **Promote** temporary safe care for orphaned and vulnerable children with a focus on family based care as an alternative to long term institutionalization
- ❖ **Pursue** our commitment to be a quality service provider, capacity builder and mentor, innovator and agent of change



## A CHILD PROTECTION ORGANIZATION



### Contact Us



Tel: +27 (0)39 317 2761  
Email: [info@gcf.org.za](mailto:info@gcf.org.za)  
Website: [www.gcf.org.za](http://www.gcf.org.za)  
PO Box 22910 Gayridge, Margate  
4275, SOUTH AFRICA  
Lot 32 Alexander Road, Gayridge  
Margate, SOUTH AFRICA

NPO No: 004-524  
Trust Registration No: IT 5570/1992/PMB  
PBO No: 18/11/13/1118

#### Banking Details

Account Name	Give a Child a Family
Bank	Nedbank
Account No	1398 047 244
Branch	Port Shepstone
Branch Code	139828
Swift Code	NEDSZAJJ

